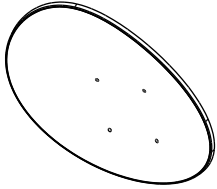
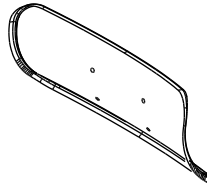


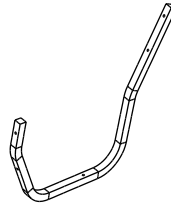
A1 : Main Reflector
(1ea)



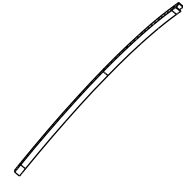
A2 : Sub Reflector
(1ea)



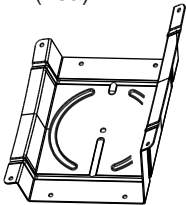
A3 : Support Arm
(2ea)



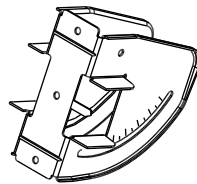
A4 : LNBF Guide
(1ea)



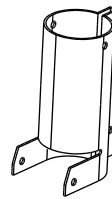
A5 : Back Mount Tilt
(1ea)



A6 : Back Mount Elevation
(1ea)



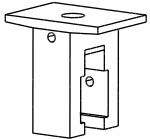
A7 : Weaving Tube
(1ea)



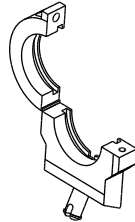
A8 : LNBF Guide Seat
(2ea)



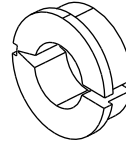
A9 : Holder Supporter
(5ea)



A10 : LNBF Ku Band Holder
(5ea)



A11 : LNBF Ku Band Adapter
(5ea)



A12 : Support Arm Cap
(4ea)



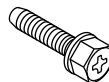
B1 : M6*12 (4ea)



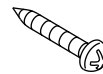
B2 : M6*35 (4ea)



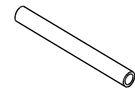
B3 : M6*35 (4ea)



B4 : M6*37 (2ea)



A13 : Enduring Tube
(1ea)



B5 : M5*15 (2ea)



B6 : M5*15 (15ea)



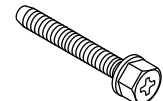
B7 : M8*20 (2ea)



B8 : M8*20 (1ea)



B9 : M8*80 (1ea)



B10 : M6*20 (2ea)



B11 : M8*12 (2ea)



B12 : M6 NUT (14ea)



B13 : M8 NUT (6ea)



B14/15 : WASHER (2ea)

