

# SUPERPRO-Z

## Programmeur universel, support ZIF40 sur port parallèle

Le SUPERPRO-Z est un programmeur universel équipé d'un support ZIF40 permettant la programmation de 1800 références de composants parmi les Eeproms, Eeproms, Flash Eeproms, PLDs et microcontrôleurs. Il permet également le test et l'identification automatique de 280 composants parmi les circuits logiques TTL et C-MOS ainsi que les mémoires SRAM/DRAM. Le SUPERPRO-Z se connecte sur le port parallèle de tout compatible PC permettant une programmation très rapide des composants. Il est intégré dans un boîtier plat permettant un transport facile de celui-ci. Les logiciels en version DOS ou Windows 95/98/ME/NT/2000/XP permettent de traiter des fichiers sous différents formats (binaire, Intel, Motorola, etc...) reconnus automatiquement. Ce logiciel permet entre autres la lecture, programmation, vérification, copie, édition de fichiers, calcul de Checksum, tests de virginité, effacements, protections en lecture et autres fonctions spécifiques aux composants.



### Il programme les composants suivants :

#### **EPROM :**

27xxx, 27Cxxxx, 27Hxxx, 27HBxxx, 27HCxxx, 27BVxxx, 27LVxxxx, 54xxx, 57xxx, 97xx, (Eeproms 8 bits et 16 bits).

#### **FLASH EPROM :**

28Fxxx, 29Cxxx, 29Fxxx, 29EExxx, 29LVxxx, 29BVxxx, 29Wxxx, 29SFxxx, 39Fxxx, 49BVxxx, 49Fxxx, 49LVxxx.

#### **EEPROM parallèle :**

28xxx, 28Cxxx, 28LCxxx, 28BVxxx, 28HCxxx, 28MCxxx, 28PCxxx, 28LVxxx.

#### **EEPROM Série :**

10Cxx, 17Cxx, 17LVxx, 17Sxx, 24AAxx, 24Cxx, 24Fxx, 24LCxx, 24Wxx, 25xxx, 25AAxx, 25Cxx, 25LCxx, 25Wxx, 57Cxx, 93AAxx, 93Cxx, 93LCxx, 93Cxxx, 95xxx.

#### **PLD :**

ATFxxx, GALxxx, PALCExxx, PALLVxxx, PEELxxx, RALxxx...

#### **MICRO :**

87xx, 87Cxxx, 87LPCxxx, 87Fxx, 89Cxxxx, 89Sxx, 89LVxx, AT90Sxxxx, AT90LSxxxx, 97Cxx, 97Lxx, MSU29xx, PIC1-2Cxxx, PIC12CExxx, PIC16Cxxx, PIC16LCxxx, PIC16Fxx, W78Exxx, W78LExxx, Z86xxx.

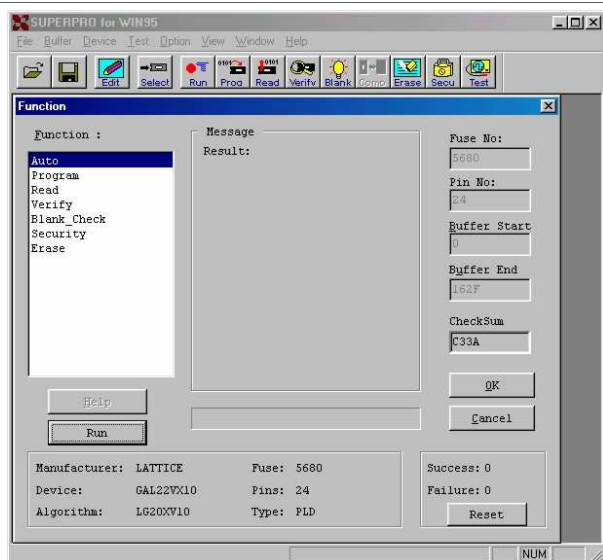
### Il test aussi les composants suivants :

#### **DRAM/SRAM :**

ATxxx, CATxxx, HMxxx, HYxxx, ISxxx, MCMxxx, KMxxx, TCxxx, Umxxx.

#### **TTL/C-MOS :**

22xxx, 40xx, 45xx, 74xxx.



### Comprend :

- Un programmeur dans son coffret.
- un bloc d'alimentation 110/220VAC-9VDC 1A.
- un câble port parallèle.
- Logiciels sur CD-ROM, (Win95/98/ME/NT/2000/XP).
- Un mode d'emploi en Français et en Anglais.

## EPROMs / EEPROMs / Mémoires FLASH :

<b>ACTRANS</b>	<b>AC39LV010</b>	<b>AC39LV020</b>	<b>AC39LV040</b>	<b>AC39LV512</b>				
<b>AKM</b>	<b>AK6420A</b>	<b>AK6440A</b>	<b>AK6480A</b>					
<b>ALI</b>	M8720							
<b>ALTERA</b>	EPC1	EPC1064	EPC1213	EPC1441				
<b>AMD</b>	1736 AM27256AP AM27512PC AM27C040 AM27C512P AM2816A AM28F010A AM29F002N	AM27128 AM27256F AM2764 AM27C080 AM27C513 AM2817A AM28F020 AM29F004B	AM27128A AM27256PC AM2764A AM27C100 AM27C64 AM2864A AM28F020A AM9732A	AM27128AF AM2732A AM2764ADC AM27C128 AM27H010 AM2864AE AM28F256 AM9764	AM27128APC AM2732B AM2764AF AM27C256 AM27H256 AM2864B AM28F256A	AM27128DC AM27512 AM2764APC AM27C256F AM27HB010 AM2864BE AM28F512	AM2716B AM27512DC AM27C010 AM27C256PC AM27LV010 AM28F001 AM28F512A	AM27256 AM27512F AM27C020 AM27C512 AM27LV010B AM28F010 AM29F002
<b>AMIC</b>	A276308	A276308A	A277308A	A278308	A278308A	A279308		
<b>ASD</b>	AE29F1008	AE29F2008						
<b>AT&amp;T</b>	ATT17128 ATT1765F	ATT17128A	ATT17128F	ATT1736	ATT1736A	ATT1736F	ATT1765	ATT1765A
<b>ATC</b>	AT93C46	AT93C56	AT93C66	AT93LC46	AT93LC56	AT93LC66		
<b>ATMEL</b>	AT17C010 AT17LV128 AT24C08 AT24C64 AT25128A AT25640A AT27C010 AT27C512 AT27HC64L AT28BV64 AT28C16F AT28C64X AT28HC291L AT28MC020 AT29C020 AT29LV020 AT49BV010 AT49F512 AT49LV020 AT93C46C	AT17C010A AT17LV256 AT24C128 <b>AT24RF08CN</b> AT25160 AT27256 AT27C010L AT27C512R AT27LV010A AT28C010 AT28C17 AT28HC04 AT28HC64 AT28MC040 AT29C040 AT29LV040 AT49BV020 AT49HBV010 AT49LV040 AT94C56	AT17C128 AT17LV512 AT24C16 AT25010 AT25160A AT2732A AT27C020 AT27C513 AT27LV020A AT28C04 AT28C17E AT28HC16 AT28HC64B AT28PC64 AT29C040A AT29LV040A AT49BV040 AT49HLV010 AT49LV040T AT93C57	AT17C256 AT17LV65 AT24C164 AT25010 AT25256 AT27B010 AT27C040 AT27C513R AT27LV040A AT28C040 AT28C256 AT28HC16L AT28LV010 AT29B010A AT29C256 AT29LV256 AT49BV040T AT49LV001 AT59C11 AT94C66	AT17C512 AT24C01 AT24C21 AT25040 AT25256A AT27B020 AT27C080 AT27C64 AT27LV256A AT28C04E AT28C64 AT28HC191 AT28LV010 AT29B020 AT29C257 AT29LV512 AT49BV512 AT49LV001T AT59C12	AT17C65 AT24C01A AT24C256 AT25080 AT25320 AT27B040 AT27C128 AT27HC256 AT27LV256R AT28C04F AT28C64B AT28HC191L AT28LV256 AT29B040A AT29C512 AT34C02 AT49F010 AT49LV002 AT59C13	AT17LV010 AT24C02 AT24C32 AT25080A AT25320A AT27BV256 AT27C256 AT27HC256L AT27LV512A AT28C16 AT28C64E AT28HC256 AT28LV64B AT29C010 AT29LV010 AT49BV002 AT49F020 AT49LV002T AT94C46	AT17LV010A AT24C04 AT24C512 AT25128 AT25640 AT27BV512 AT27C256R AT27HC64 AT28BV256 AT28C16E AT28C64F AT28HC291 AT28MC010 AT29C010A AT29LV010A AT49BV002T AT49F040 AT49LV010 AT93C46A
<b>CATALYST</b>	CAT1161 CAT24C041 CAT24C161 CAT24WC04 CAT24WC32 CAT27256P CAT27C17A CAT28F010 CAT35C102H CAT59C11I CAT93C46I	CAT1162 CAT24C042 CAT24C162 CAT24WC05 CAT24WC33 CAT27512 CAT28C17AI CAT28F020 CAT35C102I CAT64LC10 CAT93C56A	CAT24C01B CAT24C043 CAT24C163 CAT24WC08 CAT24WC64 CAT27512P CAT28C256 CAT28F512 CAT35C104 CAT64LC20 CAT93C57	CAT24C02 CAT24C08 CAT24C32 CAT24WC09 CAT24WC65 CAT2764A CAT28C512 CAT28LV256 CAT35C104H CAT64LC40 CAT93C66A	CAT24C021 CAT24C081 CAT24C64 CAT24WC128 CAT27010 CAT27HC256 CAT28C64A CAT28LV64 CAT35C104I CAT93C46A CAT93C86	CAT24C022 CAT24C082 CAT24WC01 CAT24WC129 CAT27128A CAT27HC256I CAT28C64B CAT28LV65 CAT59C11 CAT93C46AH CAT94C46	CAT24C023 CAT24C083 CAT24WC02 CAT24WC16 CAT27128AP CAT28C16A CAT28C65B CAT34W02 CAT59C11A CAT93C46AI CAT94C56	CAT24C04 CAT24C16 CAT24WC03 CAT24WC17 CAT27256 CAT28C16AI CAT28F001 CAT35C102 CAT59C11H CAT93C46H CAT94C66
<b>CYPRESS</b>	CY27C010 CY27H512 CY7C251 CY7C268 CY7C282 CY7C292	CY27C020 CY7C225 CY7C254 CY7C271 CY7C282A CY7C292A	CY27C020 CY7C225A CY7C256 CY7C271A CY7C282A CY7C293A	CY27C128 CY7C235 CY7C256A CY7C274 CY7C286	CY27C256 CY7C235A CY7C261 CY7C277 CY7C287	CY27C512 CY7C243 CY7C263 CY7C279 CY7C289	CY27H010 CY7C244 CY7C264 CY7C281 CY7C291	CY27H256 CY7C245 CY7C266 CY7C281A CY7C291A
<b>DALLAS</b>	DS1220AB DS1230AB DS1250AB DS1587 DS1687	DS1220AD DS1230W DS1250Y DS1630AB DS1693	DS1220Y DS1230Y DS1330AB DS1630Y DS17287	DS12225AB DS1235 DS1330Y DS1645AB DS17487	DS1225AD DS1245AB DS1345AB DS1645EE DS17887	DS1225D DS1245Y DS1345Y DS1645Y	DS1225E DS1249AB DS1350AB DS1650AB	DS1225Y DS1249Y DS1350Y DS1650Y
<b>EXEL</b>	XL24C01A XL2865A XL46HC64 XL93CS46	XL24C02 XL28C16A XL46HC64L XL93CS56	XL24C04 XL28C256 XL90C21 XL93LC06	XL24C16 XL28C64 XL90C41 XL93LC46	XL2804A XL28C64A XL9346 XL93LC56	XL2816A XL28C64B XL93C46 XL93LC66	XL2817A XL28C65A XL93C56 XL9764	XL2864A XL46C15 XL93C66
<b>FAIRCHILD</b>	93S66 FM24C17 FM93C86A NM27LV010	FM24C02 FM93C06 FM93CS46 NMC93C66	FM24C03 FM93C46 FM93CS56	FM24C04 FM93C46A FM93CS66	FM24C05 FM93C56 NM27C020	FM24C08 FM93C56A NM27C040	FM24C09 FM93C66 NM27C512	FM24C16 FM93C66A NMC27C512
<b>FUJITSU</b>	MBM271001 MBM27C128 MBM27C512P MBM29LV001	MBM27128 MBM27C2000 MBM27C64	MBM2716 MBM27C2001 MBM28C64	MBM27256 MBM27C256 MBM28C65	MBM2764 MBM27C256A MBM28F010	MBM27C1000 MBM27C256H MBM29F001	MBM27C1001 MBM27C32A MBM29F002	MBM27C1028 MBM27C512 MBM29F002N
<b>GI</b>	27C256	27C512	28C04A	28C16A	28C17A			
<b>HITACHI</b>	HN27128A HN27C256H HN462732P HN58C256	HN27256 HN27C301A HN48016 HN58C256AP	HN27512 HN27C4001 HN4827128 HN58C65	HN27512G HN27C512 HN4827128G	HN27512P HN27C64 HN4827128P	HN27C101 HN27C64G HN482732A	HN27C256 HN462732 HN482764	HN27C256A HN462732A HN58064

Note : les références en bleus n'existent pas en boîtier DIP et nécessitent un adaptateur optionnel.

**EPROMs / EEPROMs / Mémoires FLASH (suite) :**

<b>HOLTEK</b>	HT24C01 HT24LC08 HT27LC020 HT93LC66B	HT24C02 HT24LC16 HT27LC040	HT24C04 HT27C010 HT27LC512	HT24C08 HT27C020 HT93LC46A	HT24C16 HT27C040 HT93LC46B	HT24LC01 HT27C512 HT93LC56A	HT24LC02 HT27LC010 HT93LC56B	HT24LC04 HT27LC020 HT93LC66A
<b>HONGKONG</b>	HK1215	HK1225	HK1235	HK1245	HK1255	HK1265		
<b>HYNIX</b>	HY29F002T							
<b>HYNIX(HYUNDAI)</b>	HY2764							
<b>ICE</b>	ICE28LF010							
<b>ICT</b>	27CX010 93C46P	27CX321 93C56A	27CX322 93C66A	27CX641 93CX46	27CX642 93CX56	93C46 93CX66	93C46A	93C46AP
<b>INTEL</b>	27010 2764 27C128 2817A 68C257 P27256	27011 2764A 27C256 2864A <b>82802AA</b> P2764A	27128A 27C010 27C512 28F001BX-B <b>82802AB</b> P27C256	27256 27C010A 27C513 28F001BX-T <b>82802AC</b> P27C64	2732 27C011 27C64 28F010 87C256 P87C64	2732A 27C020 27S512 28F020 87C257	27512 27C040 2816 28F256 87C64	27513 27C100 2816A 28F512 P27128A
<b>ISSI</b>	IS24C01 IS27C512 IS28F010A	IS24C02 IS27HC010 IS28F020	IS24C04 IS27HC020 IS93C46	IS24C16 IS27HC256 IS93C56	IS24C64 IS27HC512 IS93C66	IS27C010 IS27LV010	IS27C020 IS27LV512	IS27C256 IS28F010
<b>MACRONIX</b>	MX26C1000 MX27C2000 MX27L1000 MX28F2000	MX26C1000B MX27C2000A MX27L2000 MX28F2000P	MX26C2000B MX27C256 MX27L256 MX28F4000	MX26C4000B MX27C4000 MX27L4000 MX29F001	MX26C512A MX27C4000A MX27L512 MX29F002	MX27C1000 MX27C512 MX28F1000 MX29F002N	MX27C1000A MX27C8000 MX28F1000C MX29F004	MX27C1001 MX27C8000A MX28F1000P
<b>MICROCHIP</b>	24AA00 24AA174 24C04 24FC65 24LC04B 24LC21 24LCS22A 25C040 27C128 27HC291 2864 28LV64A 85C92 93C46B 93LC46BX 93LC66BX	24AA01 24AA32 24C04A 24LC00 24LC08 24LC21A 24LCS52 25C080 27C128A 27HC64 28C04A 28PC64 93AA46 93C56 93LC56 93LC76	24AA02 24AA64 24C08 24LC01 24LC08B 24LC256 24LCS61 25C160 27C256 27HC641 28C16A 37LV128 93AA56 93C66 93LC56A 93LC76A	24AA04 24AA65 24C16 24LC01B 24LC128 24LC32 24LCS62 25C320 27C32A 27LV256 28C17A 37LV36 93AA66 93C76 93LC56B 93LC86	24AA08 24C00 24C32 24LC02 24LC16 24LC32A 25AA040 25LC040 27C512 27LV64A 28C17AF 37LV65 93AA76 93C86 93LC56BX 93LC86A	24AA128 24C01 24C64 24LC024 24LC164 24LC64 25AA080 25LC080 27C64A 2804 28C256 59C11 93AA86 93LC46 93LC66 93LCS56	24AA16 24C01A 24C65 24LC02B 24LC16B 24LC65 25AA160 25LC160 27HC191 2816 28C256F 85C72 93C06 93LC46A 93LC66A 93LCS66	24AA164 24C02 24FC32 24LC04 24LC174 24LCS21 25AA320 25LC320 27HC256 2817 28C64A 85C82 93C46 93LC46B 93LC66B 93LS46
<b>MITSUBISHI</b>	M5L27128K M5L27C512A M5M27C201 M6M80011A	M5M27128P M5L27C512AFP M5M27C256AFP M6M80021	M5L27256K M5L27C512AK M5M27C256AK M6M80041	M5L2732A M5L27C512AP M5M27C256AP M5M27C256K	M5L27512 M5L27C512P M5M27C256P	M5L27512K M5M27C100 M5M27C256P	M5L2764K M5M27C101 M5M27C401K	M5L2764P M5M27C128 M5M28F101
<b>MOTOROLA</b>	68764	68766						
<b>NANOAMP</b>	EM128C08N	EM128C08S	EM128C08T					
<b>NEC</b>	μPD271000 μPD27256C μPD2764D μPD27C256A μPD27C8001	μPD27128 μPD27256D μPD27C1000 μPD27C256AD μPD28C04	μPD27128C μPD2732A μPD27C1000A μPD27C256C μPD28C05	μPD27128D μPD27512 μPD27C1000AD μPD27C256D μPD28C256	μPD27256 μPD27512ACT μPD27C1001 μPD27C4001 μPD28C64	μPD27256A μPD27512AD μPD27C1001A μPD27C512	μPD27256AC μPD2764 μPD27C2001 μPD27C64C	μPD27256AD μPD2764C μPD27C2001D μPD27C64D
<b>NSC</b>	2816 NMC27C512 NM27C020 NM27LC010 NMC27C128Q NMC27C512A NMC93C46	2864 NM27CP256 NM27C040 NM27LC256Q NMC27C16B NMC27C512AN NMC93C56	93S56 NMC27CP256 NM27C1023 NM93C06M NMC27C256B NMC27C64 NMC93C66	9816A NM93CS66 NM27C128 NM93C06N NMC27C256BN NMC27C64B NMC93CS06	9817A NMC93CS66 NM27C128AN NM93CS56 NMC27C256BQE NMC27CP128 NMC93CS46	NM27C010 NM24C02 NM27C256 NM27C128B NMC27C256BQM NMC27CP64 NMC9817	NMC27C010 NM24C02L NM27C512Q NMC27C128B NMC27C256Q NMC9306	NM27C512 NM27C010Q NM27C64Q NMC27C128BN NMC27C32B NMC9346
<b>OKI</b>	MSM271000 MSM2764A	MSM27128 MSM27C128	MSM27128A MSM27C256	MSM27256 MSM27C256A	MSM27256A MSM27C256H	MSM2732A MSM27C64	MSM27512 MSM2816A	MSM2764 MSM28C16A
<b>PHILIPS</b>	27C010 27C64AF	27C040 27HC641	27C256 27PC32	27C256B PCF8582A	27C256F PCF8582C	27C512 PCF8582D	27C64 PCF8582E	27C64A
<b>PTC</b>	PT28C020	PT29C020						
<b>RAMTRON</b>	FM24C04	FM24C16	FM25040	FM25160				
<b>RICOH</b>	27C256	27C64						
<b>SAMSUNG</b>	KM2816A KM28C17 KM28C65A	KM2817A KM28C171 KM28C65I	KM2864A KM28C256	KM2864AH KM28C256I	KM2865A KM28C64	KM2865AH KM28C64A	KM28C16 KM28C64I	KM28C16I KM28C65
<b>SANYO</b>	<b>LE28F1601T</b> <b>LE28FV4001ATS</b>	<b>LE28F2001ATS</b> <b>LE28FV4001M</b>	<b>LE28F4001ATS</b> <b>LE28FV4001T</b>	<b>LE28F4001M</b> <b>LE28FV8001T</b>	<b>LE28F4001T</b>	<b>LE28F8001T</b>	<b>LE28FV1601T</b>	<b>LE28FV2001ATS</b>
<b>SEQ</b>	27128 2817A 48F512 5517A	27256 2817AH 5213 5517AH	2764 2864 52B13	27C256 2864H 52B13H	2804 28C256 52B33	2804A 28C64 52B33H	2816A 28C65 5516A	2816AH 48F010 5516AH
<b>SIMTEK</b>	STK10C48 STK15C88	STK10C68 STK20C04	STK11C48 STK22C48	STK11C68 STK25C48	STK11C88	STK12C68	STK14C88	STK15C68
<b>SONY</b>	K1013P	K1023P						

## EPROMs / EEPROMs / Mémoires FLASH (suite) :

<b>SST</b>	SST27SF010 SST28EE011 SST29EE010 SST29VE512 SST39SF010 SST39SF512A <b>SST49LF002A</b> <b>SST49LF040</b>	SST27SF020 SST28LE011 SST29EE020 SST37VF010 SST39SF010A SST39VF010 <b>SST49LF003A</b> <b>SST49LF040A</b>	SST27SF256 SST28LF040 SST29EE512 SST37VF020 SST39SF020 SST39VF020 <b>SST49LF004</b>	SST27SF512 SST28SF040 SST29LE010 SST37VF040 SST39SF020A SST39VF020P <b>SST49LF004A</b>	SST27VF010 SST28SF040A SST29LE020 SST37VF512 SST39SF020P SST39VF040 <b>SST49LF008</b>	SST27VF020 SST28VE011 SST29LE512 SST39LH010 SST39SF040 SST39VF040P <b>SST49LF008A</b>	SST27VF040 SST28VF040 SST29VE010 SST39LH040 SST39SF040P SST39VF512 <b>SST49LF020</b>	SST27VF512 SST28VF040A SST29VE020 SST39LH512 SST39SF512 <b>SST49LF002</b> <b>SST49LF030A</b>
<b>ST</b>	M24128 M24C04 M24C16W M24W08 M25W01 M2732A M27C256B M27V405 M28C64X M29W022B M87C257 M93C8566 M93S66R M95256 MK48Z08	M24256 M24C04R M24C32 M24W16 M25W02 M27512 M27C4001 M27W101 M28F101 M48T58 M93C06 M93S46 M93S66W M95320 MK48Z12	M24C01 M24C04W M24C64 M25C01 M25W04 M2764 M27C512 M27W201 M28F151 M48T58Y M93C46 M93S46R M95010 M95640 MK48Z12B	M24C01R M24C08 M24E16 M25C02 M25W08 M2764A M27C64 M27W512 M28F201 M48Z128V M93C56 M93S46W M95020 MK48T02 MK48Z32	M24C01W M24C08R M24LC21B M25C04 M25W16 M27C1000 M27C64A M27W801 M28F256 M48Z128V M93C56B M93S56 M95040 MK48T08 ST93CS566	M24C02 M24C08W M24W01 M25C08 M27128A M27C1001 M27C801 M28256 M28F512 M48Z128Y M93C66 M93S56R M95080 MK48T12	M24C02R M24C16 M24W02 M25C16 M27256 M27C2001 M27HC641 M28C64 M28LV64 M48Z58 M93C76 M93S56W M95128 MK48T12B	M24C02W M24C16R M24W04 M25E16 M27256A M27C256 M27HC642 M28C64C M29F002T M48Z58Y M93C86 M93S66 M95160 MK48Z02
<b>TI</b>	SMJ27C256 TMS27C010A TMS27C32 TMS27PC020 TMS27PC64	SMJ27C512 TMS27C020 TMS27C512 TMS27PC040 TMS28F010	TMS27128 TMS27C040 TMS27C64 TMS27PC128 TMS28F020	TMS27128A TMS27C128 TMS27LV010A TMS27PC256 TMS28F512	TMS2732 TMS27C2001 TMS27P32A TMS27PC291 TMS29F256	TMS2732A TMS27C256 TMS27P64 TMS27PC32 TMS29F258	TMS2764 TMS27C291 TMS27PC010 TMS27PC32A TMS29F259	TMS27C010 TMS27C292 TMS27PC010A TMS27PC512 TMS29F512
<b>TOSHIBA</b>	TC541000AF TC544000 TC57256AD TMM24128AP TMM2464AP TMM27256ADI TMM2764	TC541000AP TC54400F TC57256D TMM24256 TMM27128 TMM27256B TMM2764AD	TC541001AF TC54512AF TC574000D TMM24256A TMM27128A TMM27256D TMM2764ADI	TC541001AP TC54512AP TC57512 TMM24256AP TMM27128ADI TMM2732A TMM2764AP	TC54256A TC571000D TC57512AD TMM24256B TMM27128AP TMM27512 TMM2764D	TC54256AF TC571001D TC97101P TMM24512 TMM27256 TMM27512A	TC54256AP TC57256 TMM24128 TMM24512A TMM27256A TMM27512D	TC54256P TC57256A TMM24128A TMM24512P TMM27256AD TMM27512DI
<b>UMC</b>	2732 28H64	2764 VT27C128	VT27C256	VT27C512	VT27C64			
<b>VLSI</b>	W27C010 W27E257 W29EE010 W49F002N	W27C020 W27E512 W29EE011 W49F002U	W27C020M W27L010 W29EE012 W49F020	W27C257 W29C010 W29EE512	W27C512 W29C011A W39F010	W27E010 W29C020 W39L010	W27E020 W29C020C W49F002	W27E040 W29C040 W49F002B
<b>WSI</b>	WS27C010L WS27C512L WS57C256F WS57C64F	WS27C010R WS27C64 WS57C291	WS27C040L WS27C64F WS57C291B	WS27C128F WS27C64L WS57C45	WS27C128L WS57C128 WS57C49B	WS27C256F WS57C128F WS57C49C	WS27C256L WS57C191 WS57C51B	WS27C512F WS57C191B WS57C51C
<b>XICOR</b>	X24128 X24C02 X24C44I X24F064(3) X25045 <b>X25168</b> X25F016(3) X25F087(3) X28C16BI X2864AT X28C256 X28VC256 X86C64	X24165 X24C02I X24C45 X24F064(5) <b>X25057</b> X25320 X25F016(5) X25F087(5) X28C16BMB X2864B X28C512 X5043 X88C64	X24325 X24C04 X24F008(3) X24F128 X25080 X25640 X25F032(3) X28010 X28256 X2864BI X28C513 X5045 XM28C020	X24641 X24C04I X24F008(5) X25020 <b>X25097</b> X25642 X25F032(5) X2804A X28256I X2864BM X28C64 X68C64 XM28C040	X24645 X24C08 X24F016(3) X25021 X25128 <b>X25650</b> X25F047(3) X2804AI X2864A X2864H X28HC256 X84041	X24C01 X24C16 X24F016(5) X25040 X25160 X25C02 X25F047(5) X2804AMB X2864AI X2864HI X28HC64 X84129	X24C01A X24C16I X24F032(3) X25041 <b>X25163</b> X25F008(3) X25F064(3) X2816A X2864AM X28C010 X28LC512 X84161	X24C01I X24C44 X24F032(5) X25043 <b>X25164</b> X25F008(5) X25F064(5) X2816B X2864AMB X28C16C X28LC513 X84641
<b>XILINX</b>	XC1701 XC1718L XC1736E XC17S05L XC17S150XL XC17S40L	XC1701L XC17256D XC17512L XC17S05XL XC17S20 XC17S40XL	XC17128 XC17256E XC1765 XC17S10 XC17S20L XC17S50L	XC17128D XC17256L XC1765D XC17S100L XC17S20XL XC17S50XL	XC17128E XC17256X XC1765E XC17S100XL XC17S30 XC17S30L	XC17128L XC1736 XC1765L XC17S10L XC17S30L	XC17128X XC1736A XC1765X XC17S10XL XC17S30XL	XC1718D XC1736D XC17S05 XC17S150L XC17S40

**PLD :**

<b>AMD/MMI</b>	PALCE16V8H PALLV16V8 RAL12L6 RAL16H2 RAL16P8 RAL18L4 RAL20R4	PALCE16V8Q PALL16V8Z RAL12P6 RAL16H6 RAL16R4 RAL18P4 RAL20R6	PALCE16V8Z PALLV22V10 RAL14H4 RAL14H8 RAL16L2 RAL16R6 RAL20H2 RAL20R8	PALCE20RA10 PALLV22V10Z RAL10H8 RAL14L4 RAL16L6 RAL16R8 RAL20H8 RAL20RP4	PALCE20RA10H RAL10L8 RAL14L8 RAL16L8 RAL16RP4 RAL20L2 RAL20RP6	PALCE20RA10Q RAL10P8 RAL14P4 RAL16P2 RAL16RP6 RAL20L8 RAL20P2	PALCE20V8H RAL10P8 RAL14P4 RAL16P2 RAL16RP6 RAL20P2	PALCE20V8Q RAL12H6 RAL14P8 RAL16P6 RAL18H4 RAL20P8
<b>ATMEL</b>	ATF16LV8C ATF16V8CZ ATF22LV10CZ ATF22V10CUES	ATF16LV8CEXT ATF20V8B ATF22LV10CQZ ATF22V10CZ	ATF16V8B ATF20V8BL ATF22V10B ATF22V10CQZ	ATF16V8BL ATF20V8BQ ATF22V10BQ ATF22V10CZUES	ATF16V8BQ ATF20V8BQL ATF22V10BL ATF22V10CQZUES	ATF16V8BQL ATF22LV10C ATF22V10BQL ATF22V10C	ATF16V8C ATF22LV10CEXT ATF22V10C	ATF16V8CEXT ATF22LV10CUES ATF22V10CEXT
<b>EXEL</b>	XL78C800							
<b>GOULD</b>	PEEL20CG10							
<b>ICT</b>	22CV10A 22LV10AZ++ PEEL20V8	22CV10A+ PA7024P PEEL22CV10	22CV10A++ PA7024S PEEL22CV10AS	22CV10AZ PEEL16CV8	22CV10AZ+ PEEL18CV8Z	22CV10AZ++ PEEL18LV8Z	22LV10AZ PEEL20CG10	22LV10AZ+ PEEL20CG10A
<b>INTEL</b>	5AC312							
<b>LATTICE</b>	GAL16LV8 GAL18V10B GAL20V8Z GAL22V10D PALCE20RA10 PALL22V10Z RAL14H8/A/B RAL16L2/A/B RAL16R8/A/B RAL20H2/A/B RAL20R8/A/B ispGAL22LV10D	GAL16V8 GAL20LV8 GAL20XV10 GAL22VX10 PALCE20RA10H RAL10H8/A/B RAL14L4/A/B RAL16L6/A/B RAL16RP4/A/B RAL20H8/A/B RAL20RP4/A/B ispGAL22V10C	GAL16V8A GAL20RA10 GAL20XV10B GAL6001 PALCE20RA10Q RAL10L8/A/B RAL14L8/A/B RAL16L8/A/B RAL16RP6/A/B RAL20L2/A/B RAL20RP6/A/B ispGAL22V10C-UES	GAL16V8B GAL20RA10B GAL22LV10 GAL6001B PALCE20V8H RAL10P8/A/B RAL14P4/A/B RAL16P2/A/B RAL16RP8/A/B RAL20L8/A/B RAL20RP8/A/B	GAL16V8C GAL20V8 GAL22LV10UES GAL6002B PALCE20V8Q RAL12H6/A/B RAL14P8/A/B RAL16P6/A/B RAL18H4/A/B RAL20P2/A/B ispGAL22LV10	GAL16V8D GAL20V8A GAL22V10 PALCE16V8H PALL16V8Z RAL12L6/A/B RAL16H2/A/B RAL16P8/A/B RAL18L4/A/B RAL20P8/A/B ispGAL22LV10A	GAL16V8Z GAL20V8B GAL22V10B PALCE16V8Q PALL16V8Z RAL12P6/A/B RAL16H6/A/B RAL16R4/A/B RAL18P4/A/B RAL20R4/A/B ispGAL22LV10B	GAL18V10 GAL20V8C GAL22V10C PALCE16V8Z PALL22V10 RAL14H4/A/B RAL16H8/A/B RAL16R6/A/B RAL18P6/A/B RAL20R6/A/B ispGAL22LV10C
<b>NSC</b>	GAL16V8 RAL10H8/A RAL14L4/A RAL16L6/A RAL16RP4/A RAL20L2/A RAL20RP6/A	GAL16V8A RAL10L8/A RAL14L8/A RAL16L8/A RAL16RP6/A RAL20L8/A RAL20RP8/A	GAL20RA10 RAL10P8/A RAL14P4/A RAL16P2/A RAL16RP8/A RAL20P2/A SCAN22CV10	GAL20V8 RAL12H6/A RAL14P8/A RAL16P6/A RAL18H4/A RAL20P8/A	GAL20V8A RAL12L6/A RAL16H2/A RAL16P8/A RAL18L4/A RAL20R4/A	GAL22CV10 RAL12P6/A RAL16H6/A RAL16R4/A RAL18P4/A RAL20R6/A	GAL22V10 RAL14H4/A RAL16H8/A RAL16R6/A RAL20H2/A RAL20R8/A	GAL6001 RAL14H8/A RAL16L2/A RAL16R8/A RAL20H8/A RAL20RP4/A
<b>PHILIPS</b>	LVT22V10							
<b>ST</b>	GAL16V8 RAL10P8/A RAL14P4/A RAL16P2/A RAL16RP8/A RAL20P2/A	GAL16V8A RAL12H6/A RAL14P8/A RAL16P6/A RAL18H4/A RAL20P8/A	GAL20V8 RAL12L6/A RAL16H2/A RAL16P8/A RAL18L4/A RAL20R4/A	GAL20V8A RAL12P6/A RAL16H6/A RAL16R4/A RAL18P4/A RAL20R6/A	GAL22V10 RAL14H4/A RAL16H8/A RAL16R6/A RAL20H2/A RAL20R8/A	PLC18V8Z PLC18V8ZI PLC18V8ZII PLC42VA12	PLC18V8Z PLC18V8ZII PLC18V8ZIII PLC42VA12	PLC18V8Z PLC18V8ZII PLC18V8ZIII PLC42VA12
<b>VLSI</b>	GAL16V8							

**DRAM / SRAM (test) :**

<b>ATMEL</b>	AT3864L		AT38H256					
<b>CATALYST</b>	CAT71C256		CAT71C256L					
<b>HARRIS</b>	HM6516		HM65162		HM65642			
<b>HITACHI</b>	HM6116/A HM6716	HM62256	HM6264A	HM628128	HM62832	HM62832H	HM628512 HM65256B	
<b>HYNIX(HYUNDAI)</b>	HY62256A		HY6264A					
<b>ISSI</b>	IS61C256AH	IS61C64AH	IS61LV256	IS61M256	IS62C256	IS62C64	IS62LV256	
<b>MOTOROLA</b>	MCM2018A	MCM60L256A-C	MCM60L256A-V	MCM6206	MCM6206C	MCM6264	MCM6264C MCM6706	
<b>OKI</b>	MSM51256							
<b>SAMSUNG</b>	KM62256A	KM62256AL	KM6264A	KM6264AL	KM68257LP	KM68257P	KM6865LP KM6865P	
<b>TOSHIBA</b>	TC51832	TC55256	TC55257	TC55258	TC55328P/J	TC5563APL	TC5565AFL TC5565APL	
<b>UMC</b>	UM6116 UM6264A	UM6116A	UM61256	UM61512	UM6164	UM62256	UM62256A UM6264	

**TTL / CMOS (test) :**

22100	4000	4001	4002	4009	4010	40106	4011	4012	4013	4015	4016	40161	40162	4017	40174	40175	4018
4019	40192	40193	4022	4023	4024	4025	4027	4028	4029	4030	4031	4034	4040	4041	4042	4043	4044
4048	4049	4050	4051	4066	4068	4069	4070	4071	4072	4073	4075	4076	4077	4078	4081	4082	4093
4501	4503	4506	4510	4511	4512	4514	4515	4518	4519	4520	4529	4532	4543	4572	7400	7401	7402
7403	7404	7405	7406	7407	7408	7409	7410	74107	40109	7411	74112	74113	7412	74123	74125	74126	7413
74132	74133	74136	74137	74138	74139	7414	74140	74147	74148	74149	7415	74151	74153	74154	74157	74158	7416
74160	74161	74162	74163	74164	74165	74166	7417	74173	74174	74175	7418	74181	74182	74190	74191	74192	74193
74194	74195	7420	7421	7422	74237	74240	74241	74242	74243	74244	74245	7425	74251	74253	74257	74258	74259
7426	74260	74266	7427	74273	7428	74280	74283	74292	74293	74294	74298	74299	7430	7432	74354	74356	74365
74366	74367	74368	7437	74373	74374	74375	74377	7438	74386	74390	74393	7440	7442	7447	7450	7451	7452
74533	74534	74540	74541	7455	74563	74564	74573	74574	7458	74589	74595	74597	7460	7461	7462	74640	74643
74646	7465	74688	7473	7474	7476	7485	7486	7492	7493								

## Microcontrôleurs :

<b>ALI</b>	<b>M6759</b>							
<b>AMD</b>	Am8751H	Am8753H	Am87C51	Am87C521	Am87C541			
<b>ASP</b>	AP827C51	AP827C52	AP827C54	AP827C58				
<b>ATMEL</b>	AT80F51	AT80F52	AT87F51	AT87F51RC	AT87F52	AT87F55	AT87F55WD	AT87LV51
	AT87LV52	AT89C1051	AT89C1051U	AT89C2051	AT89C4051	AT89C51	AT89C51RB2	AT89C51RC
	AT89C52	AT89C55	AT89C55WD	AT89LS51	AT89LS52	AT89LS53	AT89LS8252	AT89LV51
	AT89LV52	AT89LV55	AT89S51	AT89S52	AT89S53	AT89S8252	AT90LS2323	AT90LS2343
	AT90S1200	AT90S1200A	AT90S2313	AT90S2323	AT90S2343	AT90S4414	AT90S8515	ATMEGA161
	ATMEGA161L	ATMEGA8515	ATMEGA8515L	ATMEGA8535	ATMEGA8535L			
<b>ATMEL-WM</b>	<b>T89C511B2</b>	<b>T89C511C2</b>	T89C51RB2	T89C51RC2	T89C51RD2			
<b>DALLAS</b>	DS87C520	DS89C420						
<b>EMC</b>	EM78P156E	EM78P247A	EM78P247B	EM78P447A	EM78P447B	EM78P447SA	EM78P447SB	EM78P458
	EM78P459							
<b>GOAL</b>	<b>VRS1000</b>	<b>VRS550</b>						
<b>HYNIX(HYUNDAI)</b>	GMS77C1000	GMS77C1001	GMS97C1051	GMS97C2051	GMS97C51	GMS97C52	GMS97C54	GMS97C56
	GMS97C58	GMS97L1051	GMS97L2051	GMS97L51	GMS97L52	GMS97L54	GMS97L56	GMS97L58
<b>ICSI</b>	IC89LV51A	IC89LV52A	IS89C54	IS89C58	IS89C64	IS89E58		
	IS89E64							
<b>INFINEON</b>	SAB-C501G-1EP	SAF-C501G-1EP	SAF-C513AO-2EP					
<b>INTEL</b>	8744	8744H	8751	8751BH	8751H	8752BH	<b>8796BH</b>	<b>8796JF</b>
	<b>8797BH</b>	<b>8797JF</b>	<b>87C196CA</b>	<b>87C196JQ</b>	<b>87C196JR</b>	<b>87C196JT</b>	<b>87C196JV</b>	<b>87C196KB</b>
	<b>87C196KC</b>	<b>87C196KD</b>	<b>87C196KQ</b>	<b>87C196KR</b>	<b>87C196KS</b>	<b>87C196KT</b>	<b>87C196LA</b>	<b>87C196MC</b>
	<b>87C196MH</b>	87C251SA	87C251SB	87C251SP	87C251SQ	87C51	87C51FA	87C51FB
	87C51FC	87C52	87C54	87C58				
<b>ISSI</b>	IS89C51A	IS89C52	IS89C52A					
<b>MACRONIX</b>	MX10E8050I	MX10FLCD	MX10FMAXD					
<b>MEGAWIN</b>	MPC89L516X2	MPC89L556X2						
<b>MICROCHIP</b>	CF7645	CF7665	CF7685					
	PIC12C508	PIC12C508A	PIC12C509	PIC12C509A	PIC12C671	PIC12C672	PIC12CE518	PIC12CE519
	PIC12CE673	PIC12CE674	PIC16C52	PIC16C54	PIC16C54A	PIC16C54B	PIC16C54C	PIC16C55
	PIC16C554	PIC16C556	PIC16C558	PIC16C56	PIC16C56A	PIC16C57	PIC16C57C	PIC16C58
	PIC16C58A	PIC16C58B	PIC16C61	PIC16C620	PIC16C621	PIC16C622	PIC16C70	PIC16C71
	PIC16C710	PIC16C711	PIC16C715	PIC16C71A	PIC16C84	<b>PIC16C923</b>	<b>PIC16C924</b>	<b>PIC16C925</b>
	<b>PIC16C926</b>	PIC16CE623	PIC16CE624	PIC16CR625	PIC16CR83	PIC16CR84	PIC16F54	PIC16F57
	PIC16F83	PIC16F84	PIC16HV540	PIC16LC54A	PIC16LC554	PIC16LC558	PIC16LC58A	PIC16LC622
	PIC16LC71	PIC16LC710	PIC16LC711	<b>PIC16LC923</b>	<b>PIC16LC924</b>	PIC16LF54	PIC16LF57	PIC16LV54A
	PIC16LV58A							
<b>MOSEL-VITELC</b>	MSU1958	MSU2952	MSU2958	MSU2964				
<b>PHILIPS</b>	P87C51	P87C51FA	P87C51FB	P87C51FC	<b>P87C51MA2</b>	<b>P87C51MB2</b>	<b>P87C51MC2</b>	P87C51RA+
	P87C51RA2	P87C51RB+	P87C51RB2	P87C51RC+	P87C51RC2	P87C51RD+	P87C51RD2	P87C51SB
	P87C51SF	P87C51UB	P87C51UF	P87C51X2	P87C52	P87C524	P87C528	<b>P87C52</b>
	P87C52SB	P87C52SF	P87C52UB	P87C52UF	P87C52X2	P87C54	P87C54SB	P87C54SF
	P87C54UB	P87C54UF	P87C54X2	<b>P87C552</b>	<b>P87C554</b>	P87C575	P87C576	P87C58
	P87C58SB	P87C58UB	P87C58X2	<b>P87C591</b>	P87C652	P87C654	P87CL52X2	P87CL54X2
	P87L51FA	P87L51FB	P87LPC759	P87LPC760	P87LPC761	P87LPC762	P87LPC764	P87LPC767
	P87LPC768	P87LPC769	P89C138	P89C238	P89C51B	P89C51RA+	P89C51RA2B	P89C51RB+
	P89C51RB2B	P89C51RB2H	P89C51RC+	P89C51RC2B	P89C51RC2H	P89C51RD+	P89C51RD2B	P89C51RD2H
	P89C51UB	P89C51X2	P89C52B	P89C52UB	P89C52UF	P89C52X2	P89C54	P89C54B
	P89C54UB	P89C54UF	P89C54X2	P89C58	P89C58B	P89C58UB	P89C58UF	P89C58X2
	P89C60X2	P89C61X2	P89C660	P89C662	P89C664	P89C668	<b>P89C669</b>	P89LV51RD2
	P89V51RD2	<b>PSD301</b>	<b>PSD301L</b>	<b>PSD302</b>	<b>PSD302L</b>	<b>PSD303</b>	<b>PSD303L</b>	<b>PSD311</b>
	<b>PSD311L</b>	<b>PSD312</b>	<b>PSD312L</b>	<b>PSD313</b>	<b>PSD313L</b>			
<b>PTC</b>	PT8936							
<b>SSSC</b>	SSU7301							
<b>SST</b>	SST89C54	SST89C58	SST89E554RC	SST89E564RD	SST89F54	SST89F58	SST89V554RC	SST89V564RD
<b>STC</b>	STC89C516RD	STC89C58RD	STC89LE516AD	STC89LE516X2	STC89LE556AD	STC89LE556X2	TC89LV516RD	STC89LV58RD
<b>SYNCOMOS</b>	MSU1958	MSU2952	MSU2958	MSU2964	SM2965	SM59064	SM59164	SM59264
	SM5964	SM7908	SM79108	SM79164	SM7932	SM7964	SM8951	SM89516
	SM89516A	SM89516AL	SM89516L	SM8951	SM8951A	SM8951L	SM8952	SM8952A
	SM8952L	SM8954	SM8954A	SM8954AL	SM8954L	SM8958	SM8958A	SM8958AL
	SM8958L							
<b>TECHCODE</b>	T89C516	T89C52	T89C58					
<b>TEMIC</b>	T87C5101	TSC87C51	TSC87C52	TSC87C54	TSC87C58			
<b>TOPRO</b>	TP2804H	TP2804L						
<b>VERSACHIPS</b>	V87C54	V87C58						
<b>WINBOND</b>	W77E516	W77E532	W77E58	W77IE58	W77LE58	W78E354	W78E365	W78E51
	W78E516	W78E516B	W78E51	W78E51B	W78E52	W78E52B	W78E54	W78E54B
	W78E58	W78E58B	W78E62B	W78E858	W78ERD2	W78LE365	W78LE51	W78LE516
	<b>W78LE51</b>	W78LE52	W78LE54	W78LE58	W78LE812			
<b>ZILOG</b>	Z86E02	Z86E03	Z86E04	Z86E06	Z86E07	Z86E08		