

# UL 250 - 12

12V 250AH

STANDBY

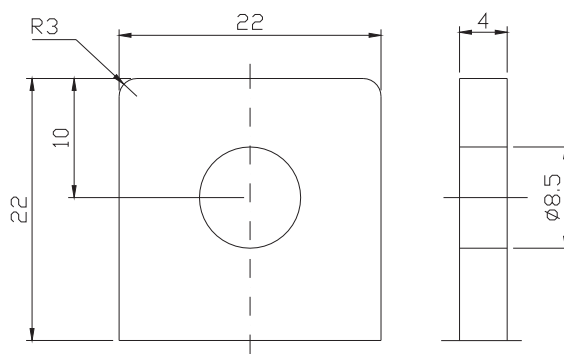
# Ultrace//<sup>®</sup>

'Quality in Every Language'

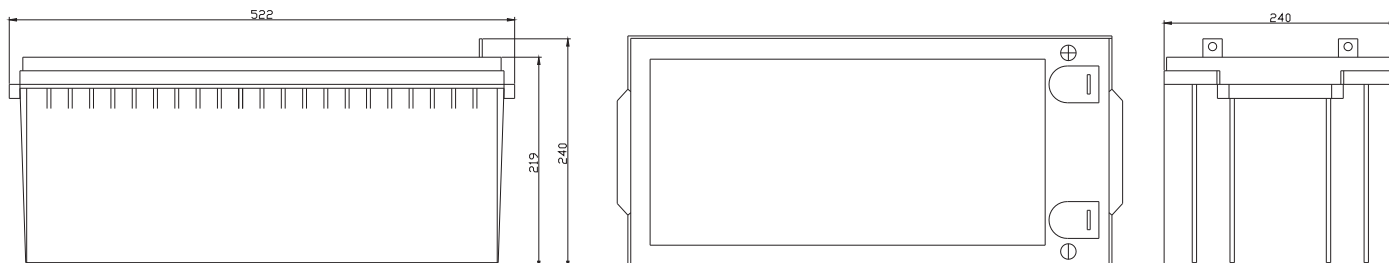
Image

AWAITING  
IMAGE

Terminal Type



Dimensions



Specifications

|                                  |   |       |                        |              |
|----------------------------------|---|-------|------------------------|--------------|
| Battery Model                    | <b>UL 250 - 12</b>                        |       |                        |              |
| Designed Floating Life           | 10 Years                                  |       |                        |              |
| Capacity (25°C)                  | 10HR (21.85A, 1.75V)                      |       |                        |              |
|                                  | 250AH                                     |       |                        |              |
| Dimensions                       | Length                                    | Width | Height                 | Total Height |
|                                  | 522mm                                     | 240mm | 219mm                  | 240 mm       |
| Approx. Weight                   | 69Kg                                      |       |                        |              |
| Internal Resistance              | Fully Charged at 25°C 2.8 Ohm             |       |                        |              |
| Self Discharge                   | 3% of capacity declined per month at 25°C |       |                        |              |
| Capacity Affected by Temperature | 40°C                                      | 25°C  | 0°C                    | -15°C        |
|                                  | 102%                                      | 100%  | 85%                    | 65%          |
| Charge Voltage (25°C)            | Cycle Use                                 |       | Float Use              |              |
|                                  | 14.0 - 15.0V (-24mV/C), max. Current: 69A |       | 13.6 - 13.8V (-18mV/C) |              |

Construction

Component — Raw material  
 Positive — Lead dioxide  
 Negative — Lead  
 Container — ABS (Flame Retardant optional)  
 Cover — ABS (Flame Retardant optional)

Sealant — Epoxy Resin  
 Safety Valve — EPDR  
 Terminal — Copper  
 Separator — Fibre Glass  
 Electrolyte — Sulphuric acid

*Sealed and maintenance free option*

*Non-spillable construction design*

# UL 250 - 12

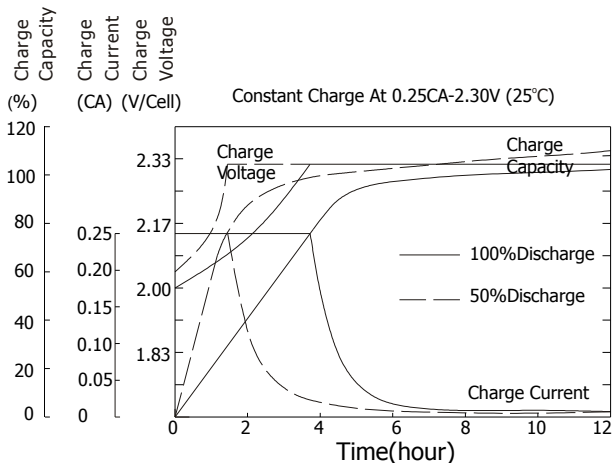
12V 250AH

STANDBY

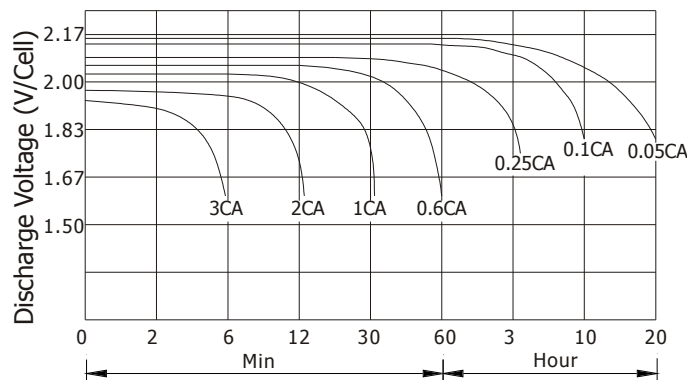
# Ultrace//<sup>®</sup>

'Quality in Every Language'

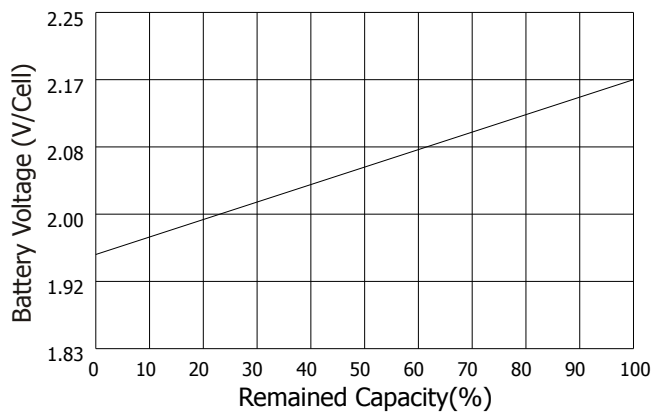
## Charge Characteristic



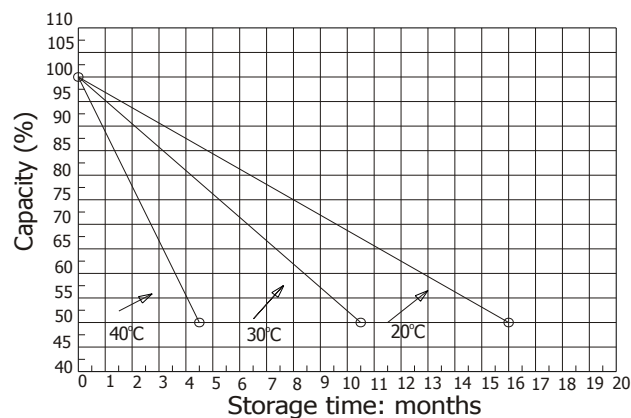
## Discharge Characteristic 25°C



## Relationship of OCV and state of charge



## Self Discharge Characteristics



## Constant Current Discharge Ratings - amperes at 25°C

| F.V / Time | 5 MIN  | 10 MIN | 15 MIN | 30 MIN | 1 HR   | 3 HR   | 5 HR   | 10 HR  | 20 HR  |
|------------|--------|--------|--------|--------|--------|--------|--------|--------|--------|
| 1.60 V     | 752.26 | 539.05 | 426.82 | 267.72 | 156.00 | 62.640 | 42.432 | 25.207 | 13.331 |
| 1.67 V     | 732.15 | 512.90 | 418.06 | 263.30 | 155.28 | 62.40  | 42.182 | 24.965 | 13.088 |
| 1.70 V     | 689.91 | 494.80 | 411.49 | 260.97 | 153.84 | 61.920 | 41.933 | 24.722 | 12.846 |
| 1.75 V     | 619.51 | 456.59 | 391.80 | 254.45 | 152.40 | 61.80  | 41.434 | 24.480 | 12.604 |
| 1.80 V     | 576.46 | 416.36 | 361.15 | 243.28 | 148.80 | 60.000 | 40.685 | 24.238 | 12.361 |
| 1.85 V     | 501.81 | 372.11 | 323.94 | 227.91 | 141.36 | 57.360 | 38.938 | 23.510 | 11.634 |

## Constant Power Discharge Ratings - watts at 25°C

| F.V / Time | 5 MIN  | 10 MIN | 15 MIN | 30 MIN | 1 HR   | 3 HR   | 5 HR   | 10 HR  | 20 HR  |
|------------|--------|--------|--------|--------|--------|--------|--------|--------|--------|
| 1.60 V     | 7164.6 | 5401.1 | 4500.9 | 2959.0 | 1784.2 | 722.88 | 491.21 | 283.44 | 149.71 |
| 1.67 V     | 7018.2 | 5158.8 | 4407.4 | 2922.0 | 1775.5 | 721.44 | 488.22 | 280.53 | 148.26 |
| 1.70 V     | 6625.0 | 4986.9 | 4347.6 | 2887.8 | 1762.6 | 717.12 | 486.72 | 279.08 | 146.81 |
| 1.75 V     | 5965.7 | 4608.0 | 4145.6 | 2822.2 | 1745.3 | 712.80 | 482.23 | 276.17 | 145.35 |
| 1.80 V     | 5532.2 | 4183.9 | 3809.0 | 2693.6 | 1702.1 | 695.52 | 474.74 | 273.26 | 143.90 |
| 1.85 V     | 4775.4 | 3715.7 | 3401.3 | 2524.0 | 1612.8 | 660.96 | 450.78 | 264.54 | 138.09 |