

CHIPMAX

Programmeur universel, support ZIF40 sur port parallèle

Le ChipMax est un programmeur universel permettant de programmer actuellement plus de 1900 références de composants parmi les Eproms, EEproms, Flash Eproms, Proms, PLDs et Microcontrôleurs. Sa librairie intègre la liste des composants les plus utilisés ainsi que les plus récents également. Il ne nécessite pas d'adaptateur pour tous les composants supportés en boîtier DIP jusqu'à 40 broches. Il se présente dans un coffret métallique et se branche sur port parallèle permettant une programmation très rapide des composants. Le ChipMax fonctionne avec des logiciels sous DOS et sous Windows95/98/NT/2000/ME/XP sur tout type de PC. Des mises à jour des logiciels sont disponibles gratuitement et régulièrement sur Internet afin de permettre la programmation des nouveaux composants mis sur le marché. Il se connecte sur le port parallèle avec une configuration automatique du port utilisé LPT1, LPT2 ou LPT3. Le ChipMax est également équipé d'une limitation de courant contre les courts-circuits, les erreurs d'insertion et les composants défectueux et le logiciel effectue la recherche automatique des composants insérés quand ceux-ci le permettent. Les différentes fonctions du logiciel permettent, l'édition des fichiers du buffer, le calcul de Checksum, lecture, programmation, copie, vérifications, tests de virginité, effacements, protections en lecture, autotest du programmeur et accepte également différents formats de fichiers, JEDEC, Intel Hex, Motorola S, TekHex et Binaire avec possibilité de splitter les fichiers sources en différents formats.

Il programme les composants suivants :

EPROM :

27xxx, 27Cxxxx, 27Hxxx, 27LVxxxx, 54xxx, 57xxx, (Eproms 8 bits et 16 bits),...

FLASH EPROM :

28Fxxx, 29Cxxx, 29Fxxx, 29LVxxx, 29BVxxx, 29Wxxx, 49Fxxx, 49LVxxx,...

EEPROM parallèle :

28xxx, 28Cxxx, 28BVxxx, 28HCxxx, 28PCxxx, 28LVxxx,

EEPROM Série :

17Cxx, 17LVxx, 17Sxx, 24Cxx, 24LCxx, 24Wxx, 25xxx, 32Cxx, 33Cxx, 35Cxx, 59Cxx, 93Cxx, 94Cxx,...

PLD :

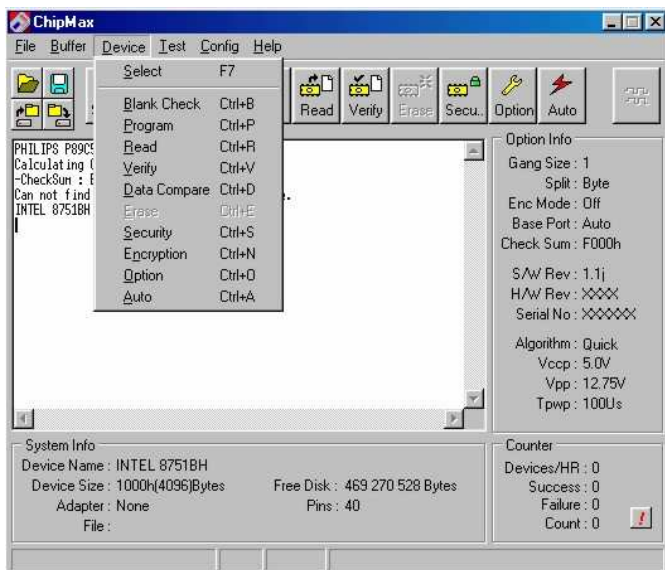
PALCE16V6, PALCE20V8, ATF16V8, ATF20V8, ATF750, GAL16V8, GAL20V8, GAL22V10.

MICRO :

87xx, 87Cxxx, 87Fxx, 89Cxxxx, 89Sxx, 89LVxx, 90Sxxxx, 97Cxx, 97Lxx, PIC16Cxxx, PIC16Fxx, 57Pxx, 78Pxxxx, 78Exx, 88Pxx.

PROM :

AT27HCxxx, 27CXxxx, 57Cxx.



Comprend :

- Un programmeur.
- Un bloc d'alimentation 220VAC/9VAC 1A.
- Un câble port parallèle.
- Logiciels sur CD-ROM, (Windows 95/98/NT/2000/ME/XP).
- Un mode d'emploi en Français et en Anglais.

Liste des composants supportés (voir pages suivantes) :

CHIPMAX : références en noir uniquement.
TOPMAX : références en noir + [bleus](#).

TOPMAX CHIPMAX

EPROMs / EEPROMs / Mémoires FLASH :

ALLIANCE	AS29F040	AS29LV800B	AS29LV800T					
ALTERA	EPC1	EPC2	EPC1064	EPC1213	EPC1441			
AMD	Am2716 Am27128A Am27C020 Am27C4096 Am28F512 Am29F002NT Am29LV002T Am29LV081 Am29LV033C Am29F040B Am29F100B Am29F400B Am29F800AB Am29LV200T Am29LV400T Am29LV800T Am29LV320DT Am29DL800BB Am29DL164DB Am29DL323GB Am29SL800CT Am45DL6408G	Am2716B Am27256 Am27C040 Am27C800 Am28F010 Am29F002NBT Am29LV002B Am29LV081B Am29LV065D Am29F080 Am29F100T Am29F400T Am29F800AT Am29LV200BB Am29LV400BB Am29LV800BB Am29LV641D Am29DL800BT Am29DL164DT Am29DL323GT Am29SL800DB Am49DL640BG	Am2732 Am27512 Am27H256 Am2817A Am28F020 Am29F002NB Am29LV004T Am29LV116BB Am29F004BB Am29F080B Am29F200B Am29F400AB Am29F800BB Am29LV200BT Am29LV400BT Am29LV800BT Am29LV641MH Am29DL162CB Am29DL322CB Am29DL324DB Am29SL800DT Am50DL128BG	Am2732A Am27C64 Am27H010 Am2864A Am29BL802CB Am29F002NB Am29LV004B Am29LV116BT Am29F004BT Am29F016 Am29F200T Am29F400AT Am29F800BT Am29LV256MH Am29LV640MB Am29LV160BB Am29LV641ML Am29DL162CT Am29DL322CT Am29DL324DT Am29SL160BB Am50DL128CG	Am2732B Am27C128 Am27HB010 Am2864AE Am29F002T Am29LV010B Am29LV008T Am29LV116DB Am29F010 Am29F16B Am29F200AB Am29F400BB Am29F800MH Am29LV320DB Am29LV640MT Am29LV160BT Am29DL316CB Am29DL162DB Am29DL322DB Am29DL640G Am29SL160BT Am50DL128CH	Am2764 Am27C256 Am27LV010B Am2864B Am29F002BT Am29LV040B Am29LV008B Am29LV116DT Am29F010A Am29F017B Am29F200AT Am29F400BT Am29F800DB Am29LV320DT Am29LV800B Am29LV800DT Am29LV160DB Am29DL316CT Am29DL162DT Am29DL322DT Am29DL323DB Am29PL160CB Am29SL160CB Am50DL9608BG	Am2764A Am27C512 Am27C1024 Am2864BE Am29F002B Am29LV001BT Am29LV008BT Am29LV017B Am29F010B Am29F017D Am29F200BB Am29F800B Am29F160DT Am29LV320MB Am29LV800DT Am29LV800DB Am29LV160DT Am29DL400BB Am29DL163CB Am29DL323DB Am29PL160CT Am29SL160CT Am50PDL193BH	Am27128 Am27C010 Am27C2048 Am28F256 Am29F002BB Am29LV001BB Am29LV008BB Am29LV017D Am29F040 Am29F032B Am29F200BT Am29F800T Am29LV200B Am29LV400B Am29LV800DB Am29LV320DB Am29DL400BT Am29DL163CT Am29DL323DT Am29SL800CB Am42DL640AG Am50PDL193CH
AMIC	A276308A A29002U A29010L A29040B A29800TM A29L004UL A29L800BM A29L160UM A29L160FUV A49LF040TL	A276308AL A29002T A29010V A29040BL A29L040L A29L004UX A29L800BV A29L160UV A29L160FTV A50FW040TL	A27020 A290021U A29040 A29040BV A29L040V A29L004UV A29L800TM A29L160TM A29DL320FUV A50FW040MTL	A27020L A290021T A29040L A29400U A29L040X A29L004UV A29L800TV A29L160TV A29DL320FTV A50LPW40TL	A29001U A29512 A29040V A29400T A29L004TL A29L008TV A29L800HUM A29L160HUM A29DL324UV	A29001T A29512L A29040A A29800UV A29L004TX A29L008UV A29L800HUV A29L160HUV A49LF004TL	A290011U A29512V A29040AL A29800UM A29L004TV A29L400UV A29L800HTM A29L160HTM A49LF004TL	A290011T A29010 A29040AV A29800TV A29L004TW A29L400TV A29L800HTV A29L160HTV A49LF004MTL
ATMEL	AT17C65 AT17C010 AT17F040 AT17LV256A AT17LV002A AT24C01 AT24C16 AT24C512 AT25040 AT25HP512 AT27BV4096 AT27C520 AT27C1024 AT27HC256 AT27LV010L AT27RW1024 AT28C040 AT28MC040 AT29BV020 AT29C040 AT29LV020 AT45DB011B AT45DB161B AT49BV001N AT49BV002N AT49BV008AT AT49BV080T AT49BV8011 AT49BV1604 AT49BV1614 AT49BV1618 AT49BV320A AT49LW080 AT49F001ANT AT49F002ANT AT49F080T AT49F8004 AT49F1604 AT49LH002-xxJC AT49LV002T AT49LV1025 AT59C11	AT17C65A AT17C010A AT17F040A AT17LV512 AT17LV040 AT24C01A AT24C16A AT24CS128 AT25080 AT25F1024 AT27C128 AT27C010 AT27C1024L AT27LV256A AT27LV020 AT28BV16 AT28C1024 AT28PC64 AT29BV1024 AT29C040A AT29LV040A AT45DB021 AT45DB321 AT49BV001T AT49BV002T AT49BV512 AT49BV2048 AT49BV8011T AT49BV1604T AT49BV1614T AT49BV1618T AT49BV320AT AT49F001 AT49F002 AT49F512 AT49F1024 AT49F8004T AT49F1604T AT49LH004-xxJC AT49LV002NT AT49LV1614 AT59C22	AT17C128 AT17C020 AT17F080 AT17LV512A AT17LV040A AT24C02 AT24C164 AT24CS256 AT25160 AT27BV256 AT27C256 AT27C010L AT27C2048 AT27LV256R AT27LV020A AT28BV64 AT28HC16 AT28PC64E AT29C256 AT29C1024 AT45D011 AT45DB021B AT45DB321B AT49BV001NT AT49BV002NT AT49BV010 AT49BV2048A AT49BV802A AT49BV160C AT49BV1604A AT49BV162A AT49BV321 AT49F001N AT49F002N AT49F010 AT49F1025 AT49F8011T AT49F1614 AT49LV001 AT49LV010 AT49LV1614A AT59C13	AT17C128A AT17C020A AT17LV65 AT17LV010 AT17N256 AT24C02A AT24C32 AT24RF08CN AT25320 AT27BV512 AT27C256R AT27C020 AT27C4096 AT27LV512A AT27LV040 AT28C16 AT28HC16L AT28V256 AT29C257 AT29LV1024 AT45D021 AT45DB041B AT45DCB002 AT49BV001A AT49BV002A AT49BV040 AT49BV4096 AT49BV802AT AT49BV160C AT49BV1604AT AT49BV162AT AT49BV322A AT49F001INT AT49F002T AT49F020 AT49F2048 AT49F8011T AT49F1614T AT49LV001T AT49LV020 AT49LV1614AT AT93C46	AT17C256 AT17C020A AT17LV65A AT17LV010A AT17N512 AT24C04A AT24C64 AT24RF08CT AT25640 AT27BV010 AT27C512 AT27C040 AT27C400 AT27LV512R AT27LV040A AT28C17 AT28HC64 AT28LV64 AT29C512 AT29LV256 AT45D041 AT45DB041B AT45DCB004 AT49BV001ANT AT49BV002AT AT49BV040A AT49BV4096A AT49BV8192 AT49BV160CT AT49BV1614A AT49BV320 AT49BV322A AT49F001INT AT49F002NT AT49F040 AT49F4096 AT49F8192 AT49F1618T AT49LV001T AT49LV040 AT49LV1614T AT93C56	AT17C256A AT17C002A AT17LV128 AT17LV020 AT17N010 AT24C04A AT24C128 AT34C02 AT25128 AT27BV020 AT27C512R AT27C080 AT27C800 AT27LV520 AT27LV080 AT28C64 AT28HC64B AT28LV64B AT29C010 AT29LV512 AT45D081 AT45DB081B AR45DCB008 AT49BV001ANT AT49BV002ANT AT49BV040A AT49BV4096AT AT49BV8192T AT49BV8192A AT49BV160T AT49BV1614AT AT49BV320C AT49BV322AT AT49F001A AT49F002AN AT49F040T AT49F4096AT AT49F8192AT AT49F1618T AT49LV001INT AT49LV080 AT49LV2048 AT93C57	AT17C512 AT17C040 AT17LV128A AT17LV020A AT17N002 AT17N008 AT24C08 AT24C256 AT25010 AT25256 AT27BV040 AT27C513 AT32C16 AT27HC1024 AT27LV010 AT27LV1024 AT28C256 AT28HC256 AT28LV256 AT29C010A AT29LV010 AT45D161 AT45DB081B AR45DCB008 AT49BV001ANT AT49BV002AN AT49BV040T AT49BV8004 AT49BV8192A AT49BV161 AT49LV1614A AT49BV320CT AT49LV040 AT49F001AN AT49F002AN AT49F040T AT49F4096AT AT49F8192AT AT49LH002-xxTC AT49LV002 AT49LV080 AT49LV4096A AT93C66	AT17C512A AT17C040A AT17LV256 AT17LV002 AT17N040 AT24C08A AT24C256N AT25020 AT25HP256 AT27BV1024 AT27C513R AT27C516 AT27HC64 AT27LV010A AT27LV4096 AT28C010 AT28MC010 AT29BV010A AT29C020 AT29LV010A AT45DB011 AT45DB161 AT49BV001 AT49BV002 AT49BV008A AT49BV080 AT49BV8004T AT49BV8192AT AT49BV161T AT49LV1614AT AT49BV320T AT49LW040 AT49F001AT AT49F002AT AT49F080 AT49F512 AT49F8192T AT49LH004-xxTC AT49LV002N AT49LV080T AT49LV8192A AT93C86
BENCHMARQ	BQ4011	BQ4013	BQ4013Y					
BRIGHT	BM29F040	BM29F400B	BM29F400T					



EPROMs / EEPROMs / Mémoires FLASH (suite) :

CATALYST	CAT24C02	CAT24C04	CAT24C08	CAT24C16	CAT24FC32A	CAT24WC01	CAT24WC02	CAT24WC04
	CAT24WC08	CAT24WC128	CAT24WC16	CAT24WC32	CAT24WC64	CAT24WC16	CAT25C02	CAT25C04
	CAT25C08	CAT25C16	CAT25C32	CAT25C32S	CAT25C64	CAT25C128	CAT25C256	CAT27010
	CAT27128A	CAT27256	CAT27512	CAT2764A	CAT27C210	CAT27HC256	CAT28C16A	CAT28C17A
	CAT28C256	CAT28C512	CAT28C513	CAT28C64A	CAT28C64B	CAT28C65A	CAT28F010	CAT28F020
	CAT33C101	CAT33C104	CAT33C116	CAT33C116I	CAT33C204	CAT35C102	CAT35C104	CAT35C116
	CAT35C116I	CAT35C202	CAT35C204	CAT59C11	CAT93C46	CAT93C46A	CAT93C56	CAT93C86
CYPRESS	CY27C128	CY27C256	CY27C512	CY27C010	CY27C040			
DALLAS	DS1086	DS1220AB	DS1220AD	DS1220Y	DS1225AB	DS1225AD	DS1225Y	DS1230AB
	DS1230Y	DS1235YW	DS1244Y	DS1243Y	DS1245AB	DS1245Y	DS1248Y	DS1250Y
	DS1386(8K)	DS1386(32K)	DS1486	DS1643	DS1643Y	DS1644	DS1645AB	DS1645Y
	DS1650AB	DS1650Y	DS1658AB	DS1658Y				
DENSE-PAC	DPV27C101	DPV27C256	DPV27C512					
EON	EN27C512	EN27C010	EN27C020	EN27LV512	EN27LV512B	EN27LV010	EN27LV010B	EN27LV020
	EN27LV020B	EN29F512	EN29F010	EN29F002ANT	EN29F040A	EN29F002B	EN29F002T	EN29F002NB
	EN29F002NT	EN29F040	EN29LV512	EN29LV010	EN29LV040	EN29LV400B	EN29LV400T	EN29LV800AB
	EN29LV800AT							
EXEL	XLS2804A	XLS2816A	XLS2817A	XLS2864A	XLS2865A	XLS93C46	XLS93C56	XLS93C66
	XLS93CS46	XLS93LC46	XLS93LC56	XLS93LC66				
EXCELSMI	ES29LV160DB	ES29LV160DT	ES29LV320DB	ES29LV320DT	ES29LV800DT	ES29LV800DB		
FAIRCHILD	FM27C040Q	NM93C46						
FUJITSU	MB8541P	MB23280FA	MB84VD23381FJ	MB84VD23381HJ	MBM27128	MBM2716	MBM2716H	MBM27256
	MBM2732	MBM2732A	MBM2764	MBM27C1000	MBM27C1001	MBM27C1001A	MBM27C128	MBM27C128P
	MBM27C256	MBM27C256A	MBM27C256A-#	MBM27C256AP	MBM27C256H	MBM27C512	MBM27C512P	MBM27C64
	MBM27C4001	MBM28C64	MBM28C65	MBM28C256	MBM27C1024	MBM27C2048	MBM27C4096	MBM28F010
	MBM29F002T	MBM29F002B	MBM29F040	MBM29F040B	MBM29F040C	MBM29F080	MBM29F016	MBM29LV002T
	MBM29LV002B	MBM29LV004T	MBM29LV004B	MBM29LV008T	MBM29LV008B	MBM29LV008BT	MBM29LV008BB	MBM29F200BB
	MBM29F200BT	MBM29F400BB	MBM29F400BT	MBM29F400TA	MBM29F800B	MBM29F800T	MBM29F800BA	MBM29F800TA
	MBM29F160BE	MBM29F160TE	MBM29F200BC	MBM29F200TC	MBM29LV160B	MBM29LV160BE	MBM29LV160TE	MBM29LV200BB
	MBM29LV200BT	MBM29LV320BE	MBM29LV320TE	MBM29LV400BB	MBM29LV400BT	MBM29LV800BA	MBM29LV800BE	MBM29LV800TA
	MBM29LV800TE	MBM29LV800BB	MBM29LV800BT	MBM29LV160BB	MBM29LV160BT	MBM29LV160DB	MBM29LV160DT	MBM29LV650UE
	MBM29LV651UE	MBM29DL316CB	MBM29DL316CT	MBM29DL400BB	MBM29DL400BT	MBM29DL800BB	MBM29DL800BT	MBM29DL161BD
	MBM29DL161TB	MBM29DL162CB	MBM29DL162CT	MBM29DL163CB	MBM29DL163CT	MBM29DL32BF	MBM29DL32TF	MBM29DL322CB
	MBM29DL322CT	MBM29DL323CB	MBM29DL323CT	MBM29PL160CB	MBM29PL160CT	MBM29SL800CB	MBM29SL800CT	MBM29SL160CB
	MBM29SL160CT	MB84VF5F5FJ2	MB84VF5F5FJ2					
GENERAL-INSTRUMENT	27256	27C64	27C128	27C256	27C512	27HC64	28C04	28C04F
	28C16	28C17	28C17F	28C64	28C64A	28C64AX		
GENERIC-ALGO.	27128<21V>	27128A<12,5V>	2716<25V>	27256<12,5V>	2732<25V>	2732A<21V>	2732B<12,5V>	27512<12,5V>
	2764<21V>	2764A<12,5>	27C128<12,5V>	27C128<21V>	27C16<25V>	27C256<12,5V>	27C32<25V>	27C512<12,5V>
	27C64<12,5V>	27C64<21V>						
GREENWICH	GR281	GR881	GR3281	GR12882/3	GR27128	GR27256	GR27512	GR2764
HITACHI	HN27128A	HN27128AG	HN27128AP	HN27256	HN27256G	HN27256P	HN27512	HN27512G
	HN27512P	HN27C101AG	HN27C101AP	HN27C101G	HN27C101P	HN27C256	HN27C256AG	HN27C256HG
	HN27C256G	HN27C301G	HN27C301P	HN27C4001G	HN27C512AG	HN27C64G	HN462716	HN462716G
	HN462732G	HN48016P	HN4827128G	HN4827128P	HN482732AG	HN482764G	HN482764P	HN58064
	HN58C65P	HN58C256P(Page)	HN58P256P(Single)	HN58C1001	HN27C1024HG	HN27C4096G	HN28F101	
HOLTEK	HT27C010	HT27LC020	HT27C040					
HYNIX(HYUNDAI)	HY2764	HY27C64A	HY29F002CT	HY29F002TT	HY29F040	HY29F040A	HY29F080T	HY29F400BT
	HY29F400TT	HY29F800BT	HY29F800TT	HY29LV400BT	HY29LV400TT	HY29LV800BT	HY29LV800TT	HY29LV160BT
	HY29LV160TT	HY29DL162BT	HY29DL162TT	HY29DL163BT	HY29DL163TT	HY29DS162BT	HY29DS162TT	HY29DS163BT
	HY29DS163TT	HY29LV320BT	HY29LV320TT	HY91U3204AD	HY91U3208AD	HY96U1604M	HY93C46	
ICT	27CX010	93C46	93C46A	93C56A	93C66A	93CX46	93CX56	93CX66
IMT	IM29F001T	IM29F002T						
INTEL	2716	2732	2732A	2764	2764A	27128	27128A	27128B
	27256	27512	27010	27C010	27C010A	27011	27C011	27C020
	27C040	27C100	27C128	27C256	27C400	27C512	27C513	27C64
	87C64	P27128A	P27128B	P27256	P27512	P2764A	P27C128	P27C256
	P27C64	27210	27C210	27C220	27C240	2816A	2817A	2864
	2864A	28F256-###P1C2	28F256-###P2C2	28F256A	28F512	28F010	28F020	28F001BX-B
	28F001BX-T	AB28F200BRB	AB28F200BRT	AB28F400BRB	AB28F400BRT	N82802AB	E82802AB	N82802AC
	E82802AC	DA28F016SA	DA28F016SV	DA28F320J5	DA28F640J5	DD28F032SA	DT28F160F3-B	DT28F160F3-T
	DT28F160S3	DT28F320S3	E28F002BC-T	P28F002BC-T	E28F002BX/L-B	E28F002BX/L-T	E28F002BV/E-B	E28F002BV/E-T
	E28F004B5-B	E28F004B5-T	E28F004BX/L-B	E28F004BV-L	E28F004BV-B	E28F004BV-T	E28F004BE-B	E28F004BE-T
	E28F004S3	E28F008BE-B	E28F008BE-T	E28F008BV-B	E28F008BV-T	E28F008S3	E28F008S5	E28F008SA
	E28F008SA-L	E28F016S3	E28F016S5	E28F016SA	E28F016SV	E28F200BX/L-B	E28F200BX/L-T	E28F200BV/E-B
	E28F200BV/E-T	E28F200CV-B	E28F200CV-T	E28F200B5-B	E28F200B5-T	E28F400BX/L-B	E28F400BX/L-T	E28F400BV/E-B
	E28F400BV/E-T	E28F400CV-B	E28F400CV-T	E28F400B5-B	E28F400B5-T	E28F400B3-B	E28F400B3-T	E28F400C3-B
	E28F400C3-T	E28F800CE-B	E28F800CE-T	E28F800CV-B	E28F800CV-T	E28F800B5-B	E28F800B5-T	E28F160S3
	E28F160S5	E28F320J3A	E28F640J3A	E28F128J3A	E28F320J5	E28F640J5	E28F004B3-B	E28F004B3-T
	E28F008B3-B	E28F008B3-T	E28F016B3-B	E28F016B3-T	E28F800B3-B	E28F800B3-T	E28F160B3-B	E28F160B3-T
	E28F320B3-B	E28F320B3-T	E28F800C2-BA	E28F800C2-TA	E28F160C2-BA	E28F160C2-TA	E28F008C3-B	E28F008C3-T
	E28F016C3-B	E28F016C3-T	E28F800C3-B	E28F800C3-T	E28F160C3-B	E28F160C3-T	E28F320C3-B	E28F320C3-T
	GE28F320W30-B	GE28F320W30-T	GE28F3204W30-B	GE28F3204W30-T	GE28F3208W30-B	GE28F3208W30-T	GE28F6408W30-B	GE28F6408W30-T
	GE28F6408W18-B	GE28F6408W18-T	GT28F004B3-B	GT28F004B3-T	E28F008B3-B	GT28F008B3-T	GT28F016B3-B	GT28F016B3-T
	GT28F400B3-B	GT28F400B3-T	GT28F800B3-B	GT28F800B3-T	GT28F160B3-B	GT28F160B3-T	GT28F320B3-B	GT28F320B3-T
	GT28F800C2-BA	GT28F800C2-TA	GT28F160C2-BA	GT28F160C2-TA	GT28F008C3-B	GT28F008C3-T	GT28F016C3-B	GT28F016C3-T
	GT28F400C3-B	GT28F400C3-T	GT28F800C3-B	GT28F800C3-T	GT28F160C3-B	GT28F160C3-T	GT28F320C3-B	GT28F320C3-T
	GT28F800F3-B	GT28F800F3-T	GT28F160F3-B	GT28F160F3-T	RD28F160C2C3-B	RD28F160C2C3-T	RD28F1604C3-B	RD28F1604C3-T
	RD28F320C3-B	RD28F320C3-T	RD28F3204C3-B	RD28F3204C3-T	RD28F320W30-B	RD28F320W30-T	RD28F3208W30-B	RD28F3208W30-T
	RD28F640W30-B	RD28F640W30-T	RD28F6408W30-B	RD28F6408W30-T	RD28F128J3AM	RD28F192S3AM	RD28F256S3AM	RD28F303W02BQ1

TOPMAX CHIPMAX

EPROMs / EEPROMs / Mémoires FLASH (suite) :

INTEL(suite)	RD38F2040W0ZBQ0 G28F640J5 PA28F400BX/L-T PA28F800B5-T RC28F640J3A TE28F640C3-T	RD38F2230WVZBQ0 PA28F200BX/L-B PA28F400BV/E-B PA28F004S3 RC28F128J3A TE28F640J3C	RD38F2240WVZBQ0 PA28F200BX/L-T PA28F400BV/E-T PA28F008S3 RC28F640K3	RD38F2240WVZDQ0 PA28F200BV/E-B PA28F400B5-B PA28F008S5 RC28F128K3	RD38F3350LLZDQ0 PA28F200BV/E-T PA28F008S5-T PA28F008SA RC28F256K3	RD38F3350WVZDQ1 PA28F200B5-B PA28F800BV/E-B PA28F008SA-L TE28F128J3C	RD38F3040L0ZBQ0 PA28F200B5-T PA28F800BV/E-T PA28F016S3 TE28F320J3C	G28F320J5 PA28F400BX/L-B PA28F800B5-B RC28F320J3A TE28F640C3-B
ISSI	IS27C512	IS27HC256	IS27HC512	IS27HC010	IS28F010	IS93C46	IS93C66	
LINVEX-TECH.	LX16CF8020	LX59CF2010	LX59CF2128	LX59CF4010	LX59CF4128	LX59CF432		
MACRONIX	MX25L802MC MX26C2000B MX26LV004BTC MX26LV800BTC MX29LV640TTC MX29LV800BPMC MX29LV320TXBI MX27C2000A MX27C1100 MX27L1000 MX28F160C3BTC MX29F004B MX29F400T MX29F1615 MX29LV033TC MX29LV800BMC MX29LV160BTC MX29LV320BTC MX29L3211AMC	MX25L1602MC MX26C1024A MX26LV004TQC MX26LV800TTC MX29LV800BBMC MX27C64 MX27C4000 MX27C2100 MX27L2000 MX28F160C3TTC MX29F004T MX29F800B MX29F040T MX29L065TC MX29LV800BTC MX29LV160TMC MX29L8000B MX29L3211MC	MX25L3202MC MX26F128J3 MX26LV004TTC MX29F016 MX29LV800BBTI MX27C256 MX27C4000A MX27C4100 MX27L4000 MX29F001B MX29F004T MX29F800T MX29L004B MX29LV320ATTC MX29LV800TMC MX29LV160TTC MX29L8000T MX29L3211AMC	MX25L6402MC MX26F640J3 MX26LV008BTC MX29LV008BTTT MX29LV008BBTC MX29LV800BTMC MX27C512 MX27C8000 MX27C4111 MX28F002B MX29F001T MX29F100B MX29F8100 MX29LV004T MX29LV320ABTC MX29LV800TTC MX29LV160ABMC MX29L8100B	MX25L6492AMC MX26L3220 MX26LV008TTC MX29LV008BTTT MX29LV160BBTC MX29LV800BTTT MX27C516 MX27C1024 MX27C8100 MX28F002T MX29F002B MX29F100T MX29F1610 MX29LV008B MX29LV400BMC MX29LV800ATMC MX29LV160ABTC MX29LV160ATMC MX29L008B	MX26C512A MX26L6419 MX26LV128J3 MX29LV160BBTC MX29LV161BTI MX27C1000 MX27C1100 MX27C8111 MX28F1000 MX29F002T MX29F200B MX29F1610A MX29LV008T MX29LV400BTC MX29LV800ATMC MX29LV160ATTC MX29LV160ATTC MX29L1611	MX26C1000A MX26L6420 MX26LV160BTC MX29LV160BTTT MX29LV161TTI MX27C1001 MX27C2048 MX27L256 MX28F2000 MX29F002NB MX29F200T MX29F1610B MX29LV081 MX29LV400TMC MX29LV800ATTC MX29LV160ATTC MX29LV320TTC MX29L1611G	MX26C1000B MX26LV004BQC MX26LV400BTC MX29LV640BTC MX29LV320BXXBI MX27C2000 MX27C4096 MX27L512 MX28F2100B MX29F002NT MX29F400B MX29F1611 MX29LV017A MX29LV400TTC MX29LV160BMC MX29LV320TTC MX29L3211MC
MICROCHIP	24AA00 24AA65 24LC00 24LC32 25AA080 25C040 27C512 28C04AF 28C17AF 37LV128 93C06 93C66B 93LC56B	24AA01 24AA128 24LC01B 24LC32A 25AA160 25C080 27C64 28C04F 28C17F 85C72 93C46 93C86 93LC66	24AA02 24C00 24LC02B 24LC64 25AA640 25C160 27HC256 28C16 28C64 85C82 93C46A 93LC46 93LC66A	24AA04 24C01A 24LC04B 24LC65 25LC040 25C320 27HC256L 28C16A 28C64A 85C92 93C46B 93LC46A 93LC66B	24AA08 24C02A 24LC08B 24LC128 25LC080 25C640 27HC64 28C16AF 28C64AX 93AA46 93C56 93LC46B 93LC86	24AA16 24C04A 24LC21 24LC256 25LC160 27256 27HC64L 28C16F 28C64AF 93AA56 93C56A 93LC46BX 93LC56	24AA164 24C32 24LC16B 24FC128 25LC320 27C128 28C04 28C17 37LV36 93AA66 93C56B 93LC56	24AA64 24C65 24LC164 25AA040 25LC640 27C256 28C04A 28C17A 37LV65 93AA86 93C66 93LC56A
MICRON	MT28F400B M28F160C3-T MT28C128564W30D-TB	MT28F400B5-T MT28F322P3-B MT28F322P3-T	MT28F400B5-B MT28F320J3	MT28F400T MT28F640J3	MT28F016S3 MT28F128J3	MT28F800B3-B MT28C64432W30A-T	MT28F800B3-T MT28C128532W30D-TB	MT28F160C3-B MT28C128532W30D-TB
MITSUBISHI	M5L2732 M5M27512P M5M27C512AP M5M27C402K M6MFB08S2TP M6MGB32BS8	M5L2764K M5M27C128K M5M27C100K M5M28C64AP M6MFT08S2TP M6MGT32BS8	M5L27128K M5M27C201K M5M27C100P M5M28C64P M6MFT08S2TP M6MGT32BS8	M5L27256K M5M27C256AK M5M27C101K M5M29F016VP M6MFT08S2TP M6MGT32BS8	M5L27512K M5M27C256K M5M27C101P M5M29FB800 M6MGT16BS4 M6MGT32BS8	M5M2764P M5M27C256P M5M27C102K M5M29FT800 M6MGT16BS4 M6MGT32BS8	M5M27128P M5M27C401K M5M27C102P M5M29FB160 M6MGT32BS4 M6MGT32BS4	M5M27256P M5M27C512AK M5M27C202K M5MM29FT160 M6MGT32BS4 M6MGT32BS4
MOSEL-VITELI	V29C51001B	V29C51001T	V29C51002B	V29C51002T				
MOSTEK	ET2716	ETC2716	ETC2732	MK2716	MK2764			
MOTOROLA	MCM2716	MCM2814	MCM68766					
NANOAMP	N08C1630E3AM							
NS	NM24C02 NM27C020 NMC27C16BQ NMC27C32H NMC27C128Q NM27C256Q NMC9307 NMC93C66	NM24C04 NM27C040 NMC27C16H NMC27C32EH NMC27C128C NMC27C512 NMC9313B NMC93C86	NM24C08 NM27C040Q NMC27C16HQ NMC27C64 NM27C128CQ NMC27C512A NMC9314B NMC93CS06	NM24C16 NM27C128 NMC2732 NMC27C64N NM27CP128 NMC27C512AN NMC9346 NMC93CS46	NM25C04 NM27C512 NMC27C32 NMC27C64B NMC27C256 NMC27C010 NMC93C06 NMC93CS56	NM2716 NM27C64 NMC27C32E NMC27C64BN NMC27C256B NMC27C020 NMC93C14 NMC93CS66	NM2716E NMC27C16 NMC27C32Q NMC27C128B NMC27C256BN NMC27C240Q NMC93C46 NMC27C1024	NM27C010 NMC27C16Q NMC27C32B NMC27C128BN NMC27C256C NMC9306 NMC93C56 NMC27C2048
NEC	μPD27128 μPD27C1001A μPD27C8001	μPD2716 μPD27C1001D μPD27C8000	μPD27256 μPD27C2001 μPD28C64	μPD2732 μPD27C256 μPD28C64C	μPD2732A μPD27C256A μPD27C1024	μPD2764 μPD27C4001 μPD27C1024A	μPD27C1000 μPD27C512 μPD27C4096	μPD27C1000A μPD27C64
NEXFLASH	NX25P10-VNI	NX25P20-VNI	NX25P40-VNI	NX29F010				
OKI	MR27V402D MSM2716 MSM27128A MSM27512AS MSM27C256HZB MSM271024ZB	MR27V402E MSM2732 MSM27128AS MSM271000 MSM27C101ZB MSM27C1024	MR27V1602D MSM2732A MSM27128AZB-RS MSM271000AS MSM27C2000 MSM27C1024AS	MR27V1652D MSM2764 MSM27256 MSM271000ZB MSM27C402ZB MSM27C2048	MR27V3202E MSM2764A MSM27256AS MSM27C128AS MSM27C452CZ MSM27C1652CZ	MR27V3202F MSM2764AZB-RS MSM27256ZB-RS MSM27C64AS MSM2816ARS MSM27C3252CZ	MR27V6402G MSM2764AS MSM27512 MSM27C256 MSM271024 MSM271024AS	MR27V6466F MSM2764RS MSM27512ZB-RS MSM27C256H MSM271024AS
PHILIPS	PCF8582C 27C512	PCF8582D 27C010	PCF8582E 27C210	PCF8592C 27C240	PCF8594C	PCF8598C	27C64A	27C256
PMC	PM25LV010 Pm29LV104RB Pm39LV010-xxJC Pm49FL008T-xxJV	PM25LV512 Pm29LV104RT Pm39LV020-xxJC Pm39LV020-xxJC	Pm29F002B Pm39F010-xxJC Pm39LV040-xxJC	Pm29F002T Pm39F020-xxJC Pm49FL002T-xxJC	Pm29F004B Pm39F040-xxJC Pm49FL004T-xxJC	Pm29F004T Pm39LV512-xxVC Pm49FL008T-xxJC	Pm29LV002B Pm39LV512R Pm49FL002T-xxJV	Pm29LV002T Pm39LV010-xxVC Pm49FL004T-xxJV
QUICK-PULSE.	2764A	27128A	27256	27512	27010	27040	27210	
RICOH	RD27C64	RD27C256						
ROCKWELL	R2764	R2764C	R2764P	R27C64	R2816			

**TOPMAX
CHIPMAX**

EPROMs / EEPROMs / Mémoires FLASH (suite) :

ROHM	BR24C01A BR93LC56 BR9020	BR24C02 BR93LC56F BR9020F	BR24C04 BR93LC66 BR9040	BR24C08 BR93LC66F BR9040F	BR24C16 BR93LL46 BR9080	BR24E16 BR93LL46F BR9080F	BR93LC46 BR9010 BR9016	BR93LC46F BR9010F BR9016F
RUSSIAN	573RF2/5	57RF4-21	573RF4-21.5	573RF4-23				
SAMSUNG	KS24L161 KS24C041 KM2864AH KM28U800T-B K8D1616UTM-Y K8D1716UTA-Y K8D3216UTM-Y K8D3216UTM-T K8D3316UTA-T KM29W040 KM29W32000(MD2+) K9F6408U0A K9F5608D0C-D(QC) K5F3264YBM(NAND) KAC070010M K5A3280YTM K5A3380YTM K5A3380YTA K5A3380YTB K5A3380YTB KM5AU1621-B KM93C46	KS24L321 KS24C080 KM2865AH KM28U800T-T K8D1616UBM-T K8D1716UBA-T K8D3216UBA-T K8D3216UBB-T K8D3316UBA-Y K8D3316UTC-T KM29W8000 KM29U64000(MD2) K9F6408U0A(MD2) K9K1G08U0M-YCB0 K5F3264YTM(NAND) KAD070300M K5A3280YBC K5A3240YBA K5A3240YBB K5D57298CM KM5AU1621-T KM93C56	KS24L641 KS24C081 KM2865AH KM28U160T-B K8D1616UTM-T K8D1716UTA-T K8D3216UBB-T K8D3216UBC-T K8D3316UBM-Y K8D3316UTM-T KM29W16000 KM29U128T(MD2) K9F6408U0A(MD2) K9F1216U0A-Y(FFX) KAB01C100M KAD070300A K5A3280YTC K5A3240YTA K5A3240YTB K5D5729YCM KM5MU0820T-B KM93C66	KS24C010 KM2816A KM28C16 KM28U160T-T K8D1616UBA-Y K8D3216UBA-Y K8D3216UBB-Y K8D3216UBC-T K8D3316UTA-Y K8D6316UBM-Y KM29W32000 KM29U128T(MD2+) K9K1208U(MD3) K9K1216U0A-D(FFX) KAB01C100M-A K5A3240YBM K5A3281CBM K5A3280YBA K5A3280YBB K5J6316CBM KM5MU0820T-T	KS24C011 KM2816A1 KM28C17 KM28U160T-T K8S64158TM K8D1616UTA-Y K8D3216UBB-Y K8D3216UBM-T K8D3316UTM-Y K8D6316UTM-Y KM29U64000 KM29U256T(MD2) K9K1208U(MD3+SP) K9K1216U0C-D(FFX) KAB01D100M K5A3240YTM K5A3281CTM K5A3280YTA K5A3280YTB K5J6316CTM KM5MU1620T-B	KS24C020 KM2817A KM28C256 K5U64418TM K8D1616UBA-Y K8D3216UBM-Y K8D3216UTA-T K8D3216UTB-T K8D3316UBA-T K8D6316UBM-T KM29U128T KM29U256T(MD2+) K9K1208U0M-Y(MP1) K9K1216D0C-D(FFX) KAB01D100M-A K5D3241YBA K5A3340YBM K5A3340YBA K5A3340YBB KAG00E006M KM5MU1620T-T	KS24C021 KM2817A1 KM28C64A K5U64818TM K8D1616UTA-T K8D3216UTA-Y K8D3216UTB-T K8D3316UBC-T K8D6316UTM-T KM29W32000(VTEC) K9F1608W0A K9K1208U0M-Y(MP3) K5F3264YBM(NOR) KBB05A300M K5D3241YTA K5A3340YTM K5A3340YTA K5A3340YTB KM5AU1620-B KM93C06	KS24C040 KM2864A KM28C65A K8D1616UBM-Y K8D1716UBA-Y K8D3216UTB-Y K8D3216UTC-T K8D3316UBM-T KM29C010 KM29W32000(MD2) K9F3208W0A K9K5608U0B-D(D&C) K5F3264YTM(NOR) KBB05A500M K5A3280YBM K5A3380YBM K5A3380YBA K5A3380YBB KM5AU1620-T KM93C07
SHARP	LH28F004SUT LH28F320 LH28F800SU LH28F320BJHE-PTT LH28F800B LRS1342 LRS1383 LRS1826	LH28F008SAT LH28F320BFN-PTTL LH28F160BJE LH28F160BJE LRS1325A LRS1386 LRS1828	LH28F008SC LH28F400SUE LH28F160S5 LH28F160BJE-TTL LRS1306 LRS1329 LRS1387 LRS1850	LH28F008SCH LH28F400BFN-PTTL LH28F160S3 LH28F160BJE-BTL LRS1311 LRS1336 LRS1805A LRS1863	LH28F016SA LH28F800BJE LH28F160SPN LH28F160BJD-TTL LRS1316A LRS1350 LRS1806A LRS1864	LH28F016SU LH28F800BGHE LH28F400SUN-Z2 LH5764 LRS1337 LRS1360 LRS1815 LRS1876	LH28F016SCT LH28F800BVHE LH28F300SJE LH57128 LRS1349 LRS1370 LRS1816	LH28F032 LH28F800SGE LH28F320BJE-PBTL LH57256 LRS1331A LRS1381A LRS1825
SANYO	LE28F1101T	LE28FV1101T						
SEEQ	27128 2817AH 28C64A 52B33H	27256 2864 28C65 E28C64	2764 2864H 28HC256 M28C64	27C256 28C010 28HC256H M28C010	2804A 28C256 28HC64 M28C010A	2816A 28C256A 52B13	2816AH 28C256AH 52B13H	2817A 28C64 52B33
SEIKO	S24C01A	S24C02A	S24C04A	S24C08ADPA	S24C16ADPA	S24C08AFJA	S24C16AFJA	
SIEMENS	SDA2506							
SIGNETICS	PSD301	PSD311	PSD302	PSD312				
SILICON7	SV5C3238UBA SV5C6416UTB	SV5C3238UTA SV5C6416UBR	SV5C6416UDA SV5C6416UTR	SV5C2832UCA SV5D6416UTA	SV5C2832UDA SV5D6416UBA	SV5C2832UCR SV5D2832UDA	SV5C2832UDR	SV5C6416UBB
SMOS	SPM27C64	SPM27C64H	SPM27128	SPM27128C	SPM27C256	SPM2864C		
SPANSION	S25FL016A S29AL004-T-02 S29AL008-S-01 S29AL016DB S99PL193JC0	S29AL002-S-02 S29AL004-B-02 S29AL008-T-01 S29AL016DT S29GL256M	S29AL002-T-02 S29AL004-S-01 S29AL008-B-01 S29GL032M_R0	S29AL002-V-02 S29AL004-T-01 S29AL016-S-02 S29PL032J12	S29AL002-S-01 S29AL004-B-01 S29AL016-T-02 S71JL064HB0	S29AL002-T-01 S29AL008-S-02 S29AL016-S-01 S71JL128HB0	S29AL002-B-01 S29AL008-T-02 S29AL016-T-01 S71PL129JA0	S29AL004-S-02 S29AL008-B-02 S29AL016MB S71PL129JB0
SST	28LF40 SST25LF080A SST27SF020 SST29EE010A SST29LE020 SST29VE010 SST31LF021 SST32HF802 SST34HF1621S SST34VF1642 SST37VF040 SST39LH040 SST39SF010A SST39VF020 SST39VF400A SST39VF800A SST39VF640 SST49LF002 SST49LF008 SST49LF040A	28SF040 SST25VF512 SST27VF256 SST29EE020 SST29LE020A SST29VE010A SST31LF021E SST32HF162 SST34HF1622 SST36VF1601 SST37VF080 SST39LF512 SST39SF020 SST39VF020P SST39LF100 SST39VF400Q SST39VF601C SST49LF002A SST49LF008A SST49LF040B	28SF040A SST25VF010 SST27VF512 SST29EE020A SST29SF512 SST29VE020 SST31LF041 SST32HF164 SST34HF3223A SST36VF1602 SST37VF080B SST39LF010 SST39SF020A SST39VF040 SST39LF200A SST39VF400Q SST39VF3202 SST49LF002B SST49LF008B SST49LF080	28VF040 SST25VF020 SST27VF010 SST29EE512 SST29SF010 SST29VE020A SST31LF041A SST34HF3243A SST34HF1641C SST36VF1641C SST38VF166 SST39LF020 SST39SF020P SST39VF040P SST39LF400A SST39VF800 SST39VF6401 SST49LF003A SST49LF016C SST49LF080A	28VF040A SST25VF040 SST27VF020 SST29LE512 SST29SF020 SST29VF512 SST32VF201 SST34HF3243A SST34HF1642 SST36VF1642C SST38VF166 SST39LF040 SST39SF040 SST39VF080Q SST39LF800A SST39VF800Q SST39VF6402 SST49LF003B SST49LF020 SST49LF080A	PH28EE011 SST27SF256 SST29EE512 SST29LE512A SST29SF020 SST29VF010 SST32VF802 SST34HF1621 SST34VF1621 SST37VF512 SST39LH512 SST39SF512 SST39SF040P SST39VF088 SST39VF100 SST39VF160 SST39WF400A SST45LF010 SST49LF004 SST49LF020A	SST25LF020A SST27SF512 SST29EE512A SST29LE010 SST29VE512 SST29VF020 SST32VF162 SST34HF1621A SST34VF1622 SST37VF010 SST39LH010 SST39SF512A SST39VF16Q SST39VF200A SST39VF160Q SST45LF010 SST49LF004A SST49LF030A	SST25LF040A SST27SF010 SST29EE010 SST29LE010A SST29VE512A SST29VF040 SST32VF164 SST34HF1621C SST34VF1641 SST37VF020 SST39LH020 SST39SF010 SST39VF010 SST39VF1681 SST39VF400A SST39VF320 SST45VF010 SST49LF004B SST49LF040
ST	M24C01 M24256 M25P64VMJ M27512 M27C64A M27C322 M27W512 M27W402 M28F102 M28W160BT M29DW323DT	M24C02 M24LC21B M25P80VMW M27C1000 M27C801 M27V256 M27W101 M27W322 M28F410 M28W160CB M29F102B	M24C04 M25P05VMW M27128A M27C1001 M27C1024 M27V101 M27W201 M28C64 M28V410 M28W160CT M29F102BB	M24C08 M25P10VMW M2716 M27C2001 M27C202 M27V201 M27W401 M28F256 M28F420 M28W320BB M29F002T	M24C16 M25P16VMJ M2732A M27C256B M27C4002 M27V402 M27W800 M28F256A M28V420 M28W320BT M29F002BB	M24C32 M25P20VMW M2764 M27C4001 M27C800 M27V800 M27W801 M28F512 M28W800CB M28W320CB M29F002BT	M24C64 M25P32VML M2764A M27C405 M27C160 M27V160 M27W102 M28F101 M28W800CT M28W320CT M29F002BNT	M24128 M25P32VMJ M27256 M27C512 M27C320 M27V322 M27W202 M28F201 M28W160BB M29DW323DB M29F010B

**TOPMAX
CHIPMAX**

EPROMs / EEPROMs / Mémoires FLASH (suite) :

ST (Suite)	M29F040 M29F200B M29W512B M29W004BB M29W400BB M29W160DB M29W640DB M50FW080 M30LW128D M93C56 M95010W M95128/V/W M95640 M95320R M48T35Y MK48Z18 M48Z256 ST24C02R ST93C46A TS27C256	M29F040B M29F200T M29W010B M29W004BT M29W400BT M29W160DT M29W640DT M50LPW020 M87C257 M93C66 M95020 M95160 M95640V M95640R M48T35Y MK48Z19 M48Z256Y ST24W02 ST93C46C TS27C64	M29F080A M29F400B M29W022BB M29W008AB M29W800B M29W160EB M29W641D M50LPW040 M9306 M93C76 M95020W M95160V M95640W MK48T08 M48T58V M48Z128 M72DW64000B ST25C02 ST93C46T TS27C64A	M29F016B M29F400T M29W022BT M29W008AT M29W800T M29W160ET M36WWT6650D0 M50LPW080 M9346 M93C86 M95040W M95160W M95010R MK48T08 M48T58Y M48Z128V NAND01GW3A ST25W02 ST93C47C TS28C16A	M29F016D M29F800AB M29W0040 M29W200BB M29W800AB M29W320DB M36WWT6650T0 M58LW032A M93C06 M93S46/W/R M95040W M95256/V/W M95020R MK48T12 MK48Z02 M48Z128Y NAND128W3A ST27128A ST93C47T TS28C17A	M29F032D M29F800AT M29W017D M29W200BT M29W800AT M29W320DT M36WWT6650B0 M58LW032D M93C46 M93S56/W/R M95080 M95320 M95040R MK48T18 MK48Z12 M48Z129 NAND256W3A ST27256 ST93C56 TS28C64	M29F100B M29F160BB M29W102BB M29W400B M29W800DB M29W400DB M50FW020 M93C46-W M93S66/V/W M95080V M95320V M95080R M48T35AY MK48Z08 M48Z129V NAND512W3A ST2764A ST93C56C	M29F100T M29F160BT M29W102BT M29W400T M29W800DT M29W400DT M50FW040 M93C46-R M95010 M95080W M95320W M95160R M48T35AV MK48Z09 M48Z129Y ST24C02 ST27C256 ST93C57C
SYNCEMOS	F29C51001B	F29C51001T	F29C51002B	F29C51002T	F29C51004B	F29C51004T		
SYNERTEK	SY2716							
TEXAS- INSTRUMENTS	SMJ2516 TMS2764 TMS27C010A TMS27PC256 TMS28F210 TMS29F040	SMJ27C256 TMS27128 TMS27C020 TMS27PC512 TMS28F200ASB TMS29LF040	SMJ27C512 TMS27C32 TMS27C040 TMS27PC010 TMS27C210 TMS29VF040	TMS2516JL TMS27C64 TMS27P32A TMS27C210 TMS28F200AZB	TMS2532 TMS27C128 TMS27P64 TMS27C210A TMS28F200AST	TMS2532A TMS27C256 TMS27PC32 TMS27C240 TMS28F200AFT	TMS2564 TMS27C512 TMS27PC64 TMS27C210 TMS28F200AZT	TMS2732A TMS27C010 TMP27PC128 TMS28C64 TMS29F010
TOSHIBA	TH50VSF2580A TH50VSF4682BCSB TH50VVF5683CDSB TC54256AF TC54H1024P TC571001AD TC57H1024AD TC58FVB400FT TC58FVB641FT TC89121 TMM2732 TMM27128A TMM27256ADI TMM27512D	TH50VSF2581A TH50VSF4683BCSB THPV357022BCBB TC54256AP TC57256 TC571001D TC57H1024D TC58FVT400FT TC58FVT641FT TC89122 TMM2764 TMM27128AD TMM27256BD TMM27512DI	TH50VSF3680A TH50VVF5584ADSB THPV357023BCBB TC54512AP TC57256AD TC574000D TC57H1025AD TC58FVB800FT TC58FVM5B2A TMM24128A TMM2764A TMM27128ADI TMM27256BDI TV00670002AABB	TH50VSF3681A TH50VVF5585ADSB THPV057022BCBB TC541000J TC57256ADI TC574000D TC57H1000AD TC58FVT800FT TC58FVM5B3A TMM24256A TMM2764AD TMM27128D TMM27256D TV00678003AABD	TH50VSF3682A TH50VVF6782AASB THPV057023BCBB TC541000P TC57256D TC571024D TC57H1001AD TC58FVB160FT TC58FVM5T3A TMM24512 TMM2764ADI TMM27128DI TMM27256DI TMM27512AD	TH50VSF3683A TH50VVF6783AASB THPV067203BABD TC541001J TC57512AD TC574009D TC57H256D TC58DVM72A1FT00 TC58FVT160FT TMM24512A TMM2764D TMM27256 TMM27512AD	TH50VSF4682AASB TH50VVF6784AASB THPV068022AABB TC541001P TC571000AD TC574200D TC58DVM82A1FT00 TC58FVB321FT TMM2464A TMM2764DI TMM27256A TMM27512AD	TH50VSF4683AASB TH50VVF682CDSB THPV068023AABB TC544000P TC571000D TC578200D TC58DVM82A1FT00 TC58FVT321FT TMM2464A TMM27128 TMM27256AD TMM27512ADI
VLSI	VT27C64	VT27C256	VT27C512					
WAFERSCALE- INTEGRATION	PSD301 PSD302R WS27C256L WS57C64F	PSD301L PSD312 WS27C512F WS27C210L	PSD301R PSD312L WS27C512L	PSD311 PSD312R WS27C64F	PSD311L WS27C010L WS27C64L	PSD311R WS27C040L WS57C128F	PSD302 WS27C128F WS57C256F	PSD302L WS27C256F WS57C512F
WHITE-MICRO	WE128K8	WE256K8	WE512K8					
WINBOND	W19L320SBT W27E020 W27L02P 29EE021 W49F002U	W19L320SST W27E040 W27L02Q W29EE512 W49F102	W27C512 W27E4096 W29C011 W29F102 W49V002	W27C010 W27F512 W29C020 W39L020P	W27E256 W27F512 W29C040 W39L040P	W27E257 W27F010 W29C101 W39V040FA	W27E512 W27L010 W29EE010 W49L102	W27E010 W27L02 W29EE011 W49F020
XICOR	X20C04 X24001 X24C44 X25323 X25080 X25057 X25F047 X2864B X28HC256 X5165AH X84129	X20C16 X24C00 X24F016 X25325 X25160 X25097 X25F087 X2864H X28LC512 X68C64 X88C64	X2402 X24C01 X24F032 X25643 X25170 X25C02 X2804A X28C010 X28LC513 X68257 X88257	X2404 X24C01A X24F064 X25645 X25320 X25F008 X2816A X28C256 X5163 X76F100 XM28C010	X24164 X24C02 X24F128 X25020 X25640 X25F016 X2816B X28C512 X5163AG X76F640	X24320 X24C04 X25043 X25021 X25642 X25F032 X2816C X28C513 X5163AH X84041	X24325 X24C08 X25163 X25040 X25128 X25F064 X28256 X28C64 X5165 X84161	X24645 X24C16 X25165 X25041 X25138 X25F128 X2864A X28HC64 X5165AG X84641
XILINX	XC1718D XC17512L XC17V04 XC17S10XL XC17S40L XC17S15A XC18V01	XC1718L XC17128E XC1701 XC17V08 XC17S20 XC17S40XL XC17S30A XC18V02	XC1736D XC17128L XC1701L XC17V16 XC17S20L XC17S50L XC17S50A XC18V04	XC1736E XC17128EL(X) XC1702L XC17S05 XC17S20XL XC17S50XL XC17S100A	XC1765D XC17256D XC1704L XC17S05L XC17S30 XC17S100L XC17S150A	XC1765E XC17256E XC17512L XC17S05XL XC17S30L XC17S100XL XC17S200A	XC1765L XC17256L XC17V01 XC17S10 XC17S30XL XC17S150L XC18V256	XC1765EL(X) XC17256EL(X) XC17V02 XC17S10L XC17S40 XC17S150XL XC18V512

Tests TTL/C-MOS :

7400	7401	7402	7403	7404	7405	7406	7407	7408	7409	7410	7411	7412	7413	7414	7415	7416	7418	7420	7422	7425
7427	7430	7432	7437	7438	7440	7442	7447	7448	7451	7455	7473	7474	7475	7476	7485	7486	7490	7492	7493	7495
74107	74109	74112	74113	74123	74125	74126	74132	74133	74136	74137	74138	74139	74140	74141	74147	74148	74151	74153	74154	74156
74157	74158	74160	74161	74162	74163	74164	74165	74166	74173	74174	74175	74185	74190	74191	74192	74194	74195	74240	74241	74243
74244	74245	74251	74253	74257	74258	74259	74260	74266	74273	74280	74283	74293	74299	74365	74366	74367	74368	74373	74374	74375
74377	74386	74393	74541	74574	74590	74640	74645	74689	4002	4011	4013	4015	4016	4023	4025	4027	4028	4040	4043	4049
4050	4051	4066	4068	4070	4071	4072	4073	4075	4077	4078	4081	4082	4501	4503	4506	4512	4518	4519	4532	4572

**TOPMAX
CHIPMAX**

PLD :

ALTERA	EP310 EP900 EPM3064A EPM7064S	EP312 EP900I EPM3128A EPM7096	EP320 EP910 EPM7032 EPM7128E	EP330 EP910I EPM7032V EPM7128S	EP600 EP1800 EPM7032AE	EP600I EP1810 EPM7032S	EP610 EP1830 EPM7064	EP610I EPM3032A EPM7064AE
AMD	AmPAL20L10A AmPAL16L8D/2 PAL16R6D/2 PAL20R4-5 PAL20R8-10/2 PALC16R8Z PALCE20V8H-25 PALCE22V10Q PALCE26V12H MACH120 MACH231	AmPAL20L10B PAL16R4-4 PAL16R8-4 PAL20R4-7 PALC16L8Q PALC20L8Z PALCE20V8Q-25 PALCE22V10Z PALCE26V12H/4 MACH130 MACH435	AmPAL20L10-20 PAL16R4-5 PAL16R8-5 PAL20R4-10/2 PALC16R4Q PALC20R4Z PALCE20V8H-10/4 PALLV16V8	AmPAL22V10 PAL16R4-6 PAL16R8-7 PAL20R6-5 PALC16R6Q PALC20R6Z PALCE20V8H-15/4 PALL16V8Z	AmPAL22V10A PAL16R4D/2 PAL16R8D/2 PAL20R6-7 PALC16R8Q PALC20R8Z PALCE20V8H-25/4 PALLV22V10	PAL16L8-4 PAL16R6-4 PAL20L8-5 PAL20R6-10/2 PALC16L8Z PALCE16V8H PALCE20V8Q-15/4 PALLV22V10Z	PAL16L8-5 PAL16R6-5 PAL20L8-7 PAL20R8-5 PALC16R4Z PALCE16V8Q PALCE20V8Q-25/4 PALCE20RA10H	PAL16L8-7 PAL16R6-7 PAL20L8-10/2 PAL20R8-7 PALC16R6Z PALCE16V8Z PALCE22V10H PALCE20RA10Q MACH110 MACH220 MACHLV436
AMD/MMI	PAL10H8 PAL14H4 PAL16C1 PAL16R4A-2 PAL16R8A-2 PAL16R4B PAL16R6D PAL14L8 PAL20X10A PAL20L8B-2 PAL20R6B-2	PAL10H8-2 PAL14H4-2 PAL16C1-2 PAL16R4A-4 PAL16R8A-4 PAL16R4B-2 PAL16R6H-15 PAL16L6 PAL20X4 PAL20RA4A PAL20R8A	PAL10L8 PAL14L4 PAL16L8 PAL16R6 PAL16X4 PAL16R4B-4 PAL16R8B PAL18L4 PAL20X4A PAL20RA4-2 PAL20R8A-2	PAL10L8-2 PAL14L4-2 PAL16L8A PAL16R6A PAL16L8B PAL16R4D PAL16R8B-2 PAL20L2 PAL20X8 PAL20R4B PAL20R8B	PAL12H6 PAL16H2 PAL16L8A-2 PAL16R6A-2 PAL16L8B-2 PAL16R4H-15 PAL16R8B-4 PAL20C1 PAL20X8A PAL20R4B-2 PAL20R8B-2	PAL12H6-2 PAL16H2-2 PAL16L8A-4 PAL16R6A-4 PAL16L8B-4 PAL16R6B PAL16R8D PAL20L10 PAL20L8A PAL20R6A	PAL12L6 PAL16L2 PAL16R4 PAL16R8 PAL16L8D PAL16R6B-2 PAL16R8H-15 PAL20L10A PAL20L8A-2 PAL20R6A-2	PAL12L6-2 PAL16L2-2 PAL16R4A PAL16R8A PAL16L8H-15 PAL16R6B-4 PAL12L10 PAL20X10 PAL20L8B PAL20R6B
ATMEL	AT22V10 ATV750BQ ATF1500A ATF1508ASV ATF22V10B ATF22LV10C(UES) ATF2500C ATF750LVC	AT22V10B ATV750BQL ATF1502AS ATF1508ASV ATF16V8B ATF22V10L ATF22LV10CZ(UES) ATF2500CQ ATF750CL	AT22V10L ATV2500 ATF1502AL ATF1508ASV ATF16V8L ATF22V10C ATF22LV10CEXT ATF2500CL ATF750LVCL	AT22LV10L ATV2500H ATF1502ASV ATF16V8C ATF22V10C(UES) ATF750CL(V750) ATF2500CQL ATF750CEXT	ATV750 ATV2500L ATF1502ASL ATF16V8CZ ATF22V10CZ(UES) ATF750LVC(V750) ATF750LVC(V750B) ATF750LVCEXT	ATV750L ATV2500B ATF1504AS ATF16L8V8C ATF22V10CEXT ATF750CL(V750) ATF750CL(V750B) ATF750LVCEXT	ATV750B ATV2500BQ ATF1504ASV ATF20V8B ATF22LV10C ATF750VCL(V750) ATF750VCL(V750B) ATF750C	ATV750BL ATF1500 ATF1508AS ATF20V8L ATF22LV10CZ ATF750C(V750) ATF750C(V750B) ATF750C
CYPRESS	PALC16L8 PALCE16V8	PALC16R4 PALCE20V8	PALC16R6 PALC22V10	PALC16R8 PLDC20G10	PALC22V10 PLDC20G10B	PALC22V10L PLDC20RA10	PALC22V10B PLDC20RA10	PALC22V10D
GOULD	PEEL153	PEEL253	PEEL173	PEEL273	PEEL18CV8	PEEL20CG10	PEEL22CV10	
HYUNDAI	HY18CV8							
ICT	PEEL153 PEEL20CG10A PA7536	PEEL253 PEEL22CV10 PA7540	PEEL173 PEEL22CV10A PA7572	PEEL273 PEEL22CV10A+ PA7572	PEEL18CV8 PEEL22CV10Z	PEEL18CV8Z PA7024	PEEL18LV8Z PA7128	PEEL20CG10 PA7140
INTEL	5C031	5C032	5C060	5C090	5C180			
LATTICE	GAL16V8 GAL20V8 GAL20VP8B GAL22V10B GAL26CLV12D ispGAL22LV10 ispGDS18 IspLSI2032V LC4064C M4A5-32/32	GAL16V8A GAL20V8A GAL18V10 GAL22V10C GAL26CLV12Z ispGAL22V10 ispGDS22 ispLSI2032E LC4128V M4A3-64/32	GAL16V8B GAL20V8B GAL18V10B GAL22V10D GAL26CV12 ispGAL22V10C ispLSI1016 ispLSI2032VE LC4128B M4A5-64/32	GAL16V8C GAL20V8C GAL20RA10 GAL22LV10C GAL26CV12B ispGAL22V10AV ispLSI1016E ispLSI2064 LC4128C	GAL16V8D GAL20LV8C GAL20RA10B GAL22LV10D GAL26V12 ispGAL22V10AB ispLSI1032 LC4032V LC4128Z	GAL16LV8C GAL20V8D GAL20XV10 GAL22LV10Z GAL6001 ispGAL22V10AC ispLSI1032E LC4032D PALLV16V8	GAL16LV8D GAL20V8Z GAL20XV10B GAL22LV10ZD GAL6001B ispGAL22V10AZC ispLSI2032 LC4064V PALLV16V8Z	GAL16LV8Z GAL16VP8B GAL22V10 GAL26CLV12C GAL6002B ispGDS14 ispLSI2064A LC4064B M4A3-32/32
NS	GAL16V8 PAL10H8A2 PAL12L6A PAL16H2 PAL16C1A2 PAL16R4A2 PAL16R8 PAL14L8A PAL20C1A PAL20X10A PAL20R6A	GAL16V8A PAL10L8 PAL12L6A2 PAL16H2A PAL16L8 PAL16R4B PAL16R8A PAL16L6 PAL20L10 PAL20L8 PAL20R6B	GAL20V8 PAL10L8A PAL14H4 PAL16H2A PAL16L8A PAL16R4B2 PAL16R8A2 PAL16L6A PAL20L10A PAL20L8A PAL20R8	GAL20V8A PAL10L8A2 PAL14H4A PAL16L2 PAL16L8A2 PAL16R6 PAL16R8B PAL18L4 PAL20X4 PAL20L8B PAL20R8A	GAL20RA10 PAL12H6 PAL14H4A2 PAL16L2A PAL16L8B PAL16R6A PAL16R8B2 PAL18L4A PAL20X4A PAL20R4 PAL20R8B	GAL22V10 PAL12H6A PAL14L4 PAL16L2A2 PAL16L8B2 PAL16R6A2 PAL12L10 PAL20L2 PAL20X8 PAL20R4A	PAL10H8 PAL12H6A2 PAL14L4A PAL16C1 PAL16R4 PAL16R6B PAL12L10A PAL20L2A PAL20X8A PAL20R4B	PAL10H8A PAL12L6 PAL14L4A2 PAL16C1A PAL16R4A PAL16R6B2 PAL14L8 PAL20C1 PAL20X10 PAL20R6
PHILIPS	P3222V10	P5222V10	PZ3032	PZ5032				
SAMSUNG	CPL16L8 CPL20L10	CPL16R4 CPL22V10	CPL16R6	CPL16R8	CPL20L8	CPL20R4	CPL20R6	CPL20R8
SIGNETICS	PLC18V8Z PLS159 PLUS16R6-7 PLUS20R6-7	PLS100 PLS159A PLUS16R8D PLUS20R8D	PLS101 PLS173 PLUS16R8-7 PLUS20R8-7	PLS152 PLUS16L8D PLUS20L8D	PLS153 PLUS16L8-7 PLUS20L8-7	PLS153A PLUS16R4D PLUS20R4D	PLS155 PLUS16R4-7 PLUS20R4-7	PLS157 PLUS16R6D PLUS20R6D
ST-MICROELEC.	GAL16V8	GAL16V8A	GAL20V8	GAL20V8A				
TEXAS- INSTRUMENTS	PAL16L8A TIBPAL16L8-5 TIBPAL16R4-7 TIBPAL16R6-10 TIBPAL16R8-12 TIBPAL20R4-7 TIBPAL20L8-15 TIBPAL22V10 TICPAL16R8-55	PAL16L8A-2 TIBPAL16L8-7 TIBPAL16R4-10 TIBPAL16R6-12 TIBPAL16R8-15 TIBPAL20R4-10 TIBPAL20R4-15 TIBPAL22V10A TICPAL22V10Z(T)	PAL16R4A TIBPAL16L8-10 TIBPAL16R4-12 TIBPAL16R6-15 TIBPAL16R8-25 TIBPAL20R6-5 TIBPAL20R6-15 TIBPAL22V10-20	PAL16R4A-2 TIBPAL16L8-12 TIBPAL16R4-15 TIBPAL16R6-25 TIBPAL16R8H-15 TIBPAL20R6-7 TIBPAL20R8-15 TIBPAL22VP10-20	PAL16R6A TIBPAL16L8-15 TIBPAL16R4-25 TIBPAL16R6H-15 TIBPAL20L8-5 TIBPAL20R6-10 TIBPAL20L8-25 TIBPAL22VP10-25	PAL16R6A-2 TIBPAL16L8-25 TIBPAL16R4H-15 TIBPAL16R8-5 TIBPAL20L8-7 TIBPAL20R8-5 TIBPAL20R4-25 TICPAL16L8-55	PAL16R8A TIBPAL16L8H-15 TIBPAL16R6-5 TIBPAL16R8-7 TIBPAL20L8-10 TIBPAL20R8-7 TIBPAL20R6-25 TICPAL16R4-55	PAL16R8A-2 TIBPAL16R4-5 TIBPAL16R6-7 TIBPAL16R8-10 TIBPAL20R4-5 TIBPAL20R8-10 TIBPAL20R8-25 TICPAL16R6-55

TOPMAX CHIPMAX

PLD (suite) :

VANTIS	M4-128N/64							
XILINX	XC7236A	XC7272A	XC7318	XC7336	XC7336Q	XC7354	XC7372	XC73108A
	XC9536	XC9572	XC95108	XC9536XL	XC9572XL	XCS3032A	XCS3032D	XCR3032XL

Microcontrôleurs :

ALI	M6759							
AMD	8751H	8753H	87C51	87C521T2	87C521	87C541		
ATMEL	AT87F51RC	AT87F55	AT87F55WD	AT87F51	AT87F52	AT89C51	AT89C51RC	AT89C52
	AT89C55	AT89C55WD	AT89C51CC03	AT89C51ED2	AT89C51ID2	AT89C51RD2	AT89LS51	AT89LS52
	AT89LV51	AT89LV52	AT89S51	AT89S52	AT89S53	AT89S8252	AT89LS8252	AT89S8253
	AT89C1051	AT89C1051U	AT89C2051	AT89C2051X2	AT89C4051	AT90LS2333	AT90LS4433	AT90LS2323
	AT90LS2343	AT90LS4434	AT90LS8535	AT90S1200	AT90S2333	AT90S4433	AT90S2313	AT90S2323
	AT90S2343	AT90S8515	AT90S4414	AT90S4434	AT90S8535	ATtiny10	ATtiny10L	ATtiny11
	ATtiny11L	ATtiny12	ATtiny12L	ATtiny13	ATtiny13V	ATtiny15L	ATtiny26	ATtiny26L
	ATtiny28L	ATtiny28V	ATmega161	ATmega161L	ATmega163	ATmega163L	ATmega8	ATmega8L
	ATmega16	ATmega16L	ATmega32	ATmega32L	ATmega8515	ATmega8515L	ATmega8535	ATmega8535L
ATMEL(TEMIC)	T87C5101	T87C5103	T87C5111	T89C51CC02	T89C5115	T89C51CC01	T89C51AC2	T89C51IB2-xM_5V
	T89C51IB2-xL_3V	T89C51IC2-xM_5V	T89C51IC2-xL_3V	T89C51RB2-xM_5V	T89C51RB2-xL_3V	T89C51RC2-xM_5V	T89C51RC2-xL_3V	T89C51RD2-xM_5V
	T89C51RD2-xM_3V	TS87C51U2	TSC71RBX2	TS71RCX2	TS71RDX2	TSC87251G1A	TSC87251G1D	TSC87251G2D
	TSC87C51	TSC87C51RB2	TSC87C51RC2	TSC87C51RD2	TSC87C52	TSC87C52X2	TSC87C54	TSC87C58
CYPRESS	CY7C63000A	CY7C63001A	CY7C63100A	CY7C63101A	CY7C63411	CY7C63412	CY7C63413	CY7C63411
	CY7C63412	CY7C63413	CY7C63511	CY7C63512	CY7C63513	CY7C63612	CY7C63613	
DALLAS	DS5000/T-8	DS5000T-32	DS87C520	DS87C530	DS89C420			
FAIRCHILD	ACE1101	ACE1202						
FUJITSU	MBL8742H							
GENCORE	GC87C520A0							
HITACHI	H8/532	H8/534	H8/536	HD64F2238				
HYNIX(HYUNDA)	GMS34004TK	GMS34112TK	GMS34140TK	GMS34004TM	GMS34112TM	GMS34140TM	GMS77C1000	GMS77C1001
	GMS81004T	GMS81008T	GMS81016T	GMS81024T	GMS81032T	GMS87C1102	GMS87C1202	GMS97C1051
	GMS97C2051	GMS97C51	GMS97C52	GMS97C54	GMS97C56	GMS97C58	GMS97L51	GMS97L52
	GMS99C58	HM99C52	HMS77C2000	HMS77C2001	HMS97C8032			
ICSI	IS89C52A	IS89C54	IS89C58	IS89C64				
INTEL	8741A	8741AH	8742	8742AH	8748	8748H	8749H	8751BH
	8752BH	8751H(1ms)	8751H(50ms)	8755A	87C196CA	87C196JQ	87C196JR	87C196JT
	87C196JV	87C196KB	87C196KC	87C196KD	87C196KQ	87C196KR	87C196KS	87C196KT
	87C196MC	87C196MD	87C196MH	87C251SB	87C42	87C51	87C521	87C51FA
	87C51FB	87C51FC	87C51RA	87C51RB	87C51RC	87C54	87C54	87L51FA
	87L51FB	87L51FC						
ISSI	IS89C51	IS89C52	IS89C51A	IS89C52A	IS89C54A			
MACRONIX	MX10FMAXDPC	MX10FMAXDQC						
MEDIA REALITY	M8064							
MICROCHIP	PIC10F200	PIC10F202	PIC10F204	PIC10F208	PIC12C508	PIC12C508A	PIC12C509	PIC12C509A
	PIC12C509AG	PIC12C509AF	PIC12CE508	PIC12CE508A	PIC12CE509	PIC12CE509A	PIC12CE518	PIC12CE519
	PIC12C671	PIC12C672	PIC12F508	PIC12F509	PIC12F629	PIC12F635	PIC12F675	PIC12F683
	PIC14000	PIC16C505	PIC16C52	PIC16C54	PIC16C54A	PIC16C54B	PIC16C54C	PIC16C55
	PIC16C55A	PIC16C56	PIC16C56A	PIC16C57	PIC16C57C	PIC16C58A	PIC16C58B	PIC16C554
	PIC16C556	PIC16C558	PIC16C61	PIC16C62	PIC16C62A	PIC16C62B	PIC16C620	PIC16C620A
	PIC16C621	PIC16C621A	PIC16C622	PIC16C622A	PIC16C63	PIC16C63A	PIC16C64	PIC16C64A
	PIC16C65	PIC16C65A	PIC16C65B	PIC16C66	PIC16C67	PIC16C71	PIC16C72	PIC16C72A
	PIC16C73	PIC16C73A	PIC16C73B	PIC16C74	PIC16C74A	PIC16C74B	PIC16C76	PIC16C77
	PIC16C773	PIC16C774	PIC16CE623	PIC16CE624	PIC16CE625	PIC16C641	PIC16C642	PIC16C661
	PIC16C662	PIC16C710	PIC16C711	PIC16C712	PIC16C715	PIC16C716	PIC16C745	PIC16C765
	PIC16C717	PIC16C770	PIC16C771	PIC16C781	PIC16C782	PIC16C84	PIC16CR83	PIC16CR84
	PIC16C923	PIC16C924	PIC16F54	PIC16F57	PIC16F627	PIC16F627A	PIC16F628	PIC16F628A
	PIC16F630	PIC16F636	PIC16F648A	PIC16F676	PIC16F684	PIC16F688	PIC16F72	PIC16F716
	PIC16LF72	PIC16F767	PIC16F73	PIC16F737	PIC16F74	PIC16F76	PIC16F77	PIC16F83
	PIC16F84	PIC16F84A	PIC16F87	PIC16F88	PIC16F818	PIC16F819	PIC16F870	PIC16F871
	PIC16F872	PIC16F873	PIC16F874	PIC16F876	PIC16F877	PIC16F873A	PIC16LF873A	PIC16F874A
	PIC16F876A	PIC16LF876A	PIC16F877A	PIC16LC73A	PIC16LC73B	PIC16LC74A	PIC16LC74B	PIC16LC77
	PIC17C42	PIC17C42A	PIC17C43	PIC17C44	PIC17C752	PIC17C756	PIC17C756A	PIC18C242
	PIC18C252	PIC18C442	PIC18C452	PIC18F1220	PIC18F1320	PIC18F2220	PIC18F2320	PIC18F242
	PIC18F248	PIC18F252	PIC18F258	PIC18F4220	PIC18F4320	PIC18F442	PIC18F448	PIC18F452
	PIC18F458	PIC18F6520	PIC18F6620	PIC18F6720	PIC18F8520	PIC18F8620	PIC18F8720	
MITSUBISHI	M37531E4	M37531E8						
MOTOROLA	MC68705P3	MC68705P5	MC68705R3	MC68705R5	MC68705U3	MC68705U5	MC68HC705J1A	MC68HC705KJ1
	MC68HC705C4A-PMC68HC705C4A-FN	MC68HC705C8-P	MC68HC705C8-FN	MC68HC705C8A-PMC68HC705C8A-FB	MC68HC705C8A-FN	MC68HC705C9-P	MC68HC705C9-P	MC68HC705D32A-P
	MC68HC705D32A-FN	MC68HC705D32A-FN	MC68HC705D9-P	MC68HC705D9-FN	MC68HC705D32-P	MC68HC705D32A-P	MC68HC705D32A-P	MC68HC705D32A-P
	MC68HC705D32A-FN	MC68HC05X16-FUMC68HC705B5-FN	MC68HC705B16-FN	MC68HC705B16-FN	MC68HC705B32-FN	MC68HC705C5-P	MC68HC705C5-FN	MC68HC705P6A-P
	MC68HC705J2-P	MC68HC705J7	MC68HC705JP7	XC68HC705J7	XC68HC705JP7	MC68HC705P6-P	MC68HC705P6-P	MC68HC705P6A-P
	MC68HC705P9-P	MC68HC705SR3	MC68HC705X4-DW	MC68HC705X32-FU	MC68HC805P18-P	MC68HC805P18-DW	MC68HC11A1-FN	MC68HC11A1-P
	MC68HC11A8-FN	MC68HC11A8-P	MC68HC11E1-FN	MC68HC11E9-FN	MC68HC11E20-FN	MC68HC11F1-FN	MC68HC11K4-FN	MC68HC11L6-FN
	MC68HC11P2-FN	MC68HC711D3-FN	MC68HC711D3-P	MC68HC711E9-FN	MC68HC711E20-FN	MC68HC711K4-FN	MC68HC711L6-FN	MC68HC711P2-FN
	MC68HC711K52V-FN	MC68HC811E2-FN	MC68HC811E2-P					
NATIONAL-SEM.	COP8SAA716	COP8SAA720	COP8SAA728	COP8SAB720	COP8SAB728	COP8SAC720	COP8SAC728	COP8SAC740
	COP8SAC744	COP8SGE720	COP8SGE728	COP8SGE740	COP8SGE744	COP8SGR720	COP8SGR728	COP8SGR740
	COP8SGR744							
NEC	8749H	78P4038GC	78P054					

**TOPMAX
CHIPMAX**

Microcontrôleurs (suite) :

PHILIPS	P87C51 P87C51RB+ P87C51RB2BN P87C51RD2BBD P87C51XAS37 P87LPC761 P89LPC903 P89LPC934 P89C51RB+ P89C51RA2BB P89C51RC2FB P89C662 P89C52B P89C52X2FN P89C54X2BBD P89V51RD2	P87C51FA P87C51RC+ P87C51RB2BA P87C51X2 P87C660X2FA P87LPC762 P89LPC906 P89LPC935 P89C51RC+ P89C51RB2BN P89C51RD2BN P89C664 P89C54B P89C52X2BA P89C58X2BN PXA-G49	P87C51FB P87C51RD+ P87C51RB2BBD P87C52X2 P87C660X2BBD P87LPC764 P89LPC907 P89LPC921 P89C51RD+ P89C51RB2BA P89C51RD2BA P89C668 P89C58B P89C52X2FA P89C58X2BA PXAC37	P87C51FC P87C52 P87C51RC2BN P87C54X2 P87C661X2FA P87LPC767 P89LPC908 P89LPC922 P89C51RB2H P89C51RB2BB P89C51RD2FA P89C51U P89C51X2BN P89C52X2BBD P89C58X2FA PXA37	P87C51MA2 P87C54 P87C51RC2BA P87C58X2 P87C661X2BBD P87LPC768 P89LPC912 P89LPC930 P89C51RC2H P89C51RC2BN P89C51RD2BB P89C52U P89C51X2BA P89C52X2FBD P89C58X2BBD PCD3755A	P87C51MB2 P87C58 P87C51RC2BBD P87C591 P87LC52X2FA P87LPC769 P89LPC912 P89LPC931 P89C51RD2H P89C51RC2BA P89C60X2BA P89C54U P89C51X2FA P89C51X2BBD P89C54X2BN P89C669FA	P87C51MC2 P87C51RA2BA P87C51RD2BN P87C654X2 P87LC54X2BBD P89LPC901 P89LPC913 P89LPC932 P89C51RA2BN P89C51RC2FA P89C61X2BA P89C58U P89C51X2BBD P89C54X2BA P89C669BBD	P87C51RA+ P87C51RA2BBD P87C51RD2BA P87C51XAG37 P85LPC764 P89LPC902 P89LPC914 P89C51RA+ P89C51RA2BA P89C51RC2BB P89C660 P89C51B P89C52X2BN P89C54X2FA P89LV51RD2
SAMSUNG	KS57P0408 KS57P21832 KS57P4304 KS86F4404 KS86P6408 KS88P6116	KS57P0504 KS57P2304 KS57P5116 KS86F4504 KS88P0716 KS88P6232	KS57P0616 KS57P2308 KS57P5208 KS86P4004 KS88P2148 KS88P8324	KS57P21516 KS57P2316 KS57P5308 KS86P4104 KS88P2416 KS88P8432	KS57P21208 KS57P2916 KS57P5312 KS86P4208 KS88P2432 KS88P0416	KS57P21408 KS57P3204 KS57P5404 KS86P4304 KS88P4504 KS88P0424	KS57P21632 KS57P4104 KS57P5532 KS86P6008 KS88P4632	KS57PP21708 KS57P4204 KS57P5616 KS86P6104 KS88P4716
SIEMENS	C501-1E	C504-2E	C505A-4E	C508A-4E	C515C-8E			
SIGNETICS	87C51 87C552 87C751	87C51FA 87C575 87C752	87C51FB 87C576 89C52	87C51FC 87C592 89C54	87C52 87C652 89C538	87C524 87C654 89C536	87C528 87C749 89C738	87C550 87C750
SILICONIANS	SM8203							
SMSC	LPC47N252							
SST	65P542R 89E52RD2	89C54 89E54RD2	89C58 89E58RD2	89E564RD 89F54	89V564RD 89F58	89E554RC	89V554RC	89E516RD2
ST-MICROELEC.	ST62E03C ST62E30B ST62T01C ST62T15B ST62T28C ST62T65	ST62E20 ST62E60 ST62T03C ST62T15C ST62T30B ST62T65B	ST62E20B ST62E60B ST62T08C ST62T10C ST62T53C ST62T65C	ST62E20C ST62E60C ST62T09C ST62T20C ST62T55C	ST62E25 ST62E65 ST62T10 ST62T20C ST62T60	ST62E25B ST62E65B ST62T10B ST62T25B ST62T60B	ST62E25C ST62E65C ST62T10C ST62T25B ST62T60C	ST62E28C ST62T00C ST62T15 ST62T25C ST62T63C
SYNCMOS	SM8951	SM8951A	SM8952	SM8952A	SM8954	SM8954A	SM8958	SM8958A
TEXAS-INSTR.	TMS7742	TMS77C82						
TOSHIBA	TMP47P241VN	TMP87PH40	TMP87PH46N	TMP87PH808N	TMP88PS49F			
WINBOND	W77E58 W78E52 W78LE51	W77E516 W78E52B W78LE52	W77E532 W78E54 W78LE54	W78E378 W78E54B W78LE516	W78E516 W78E58 W78LE516B	W78E516B W78E58B W78LE58	W78E51 W78E62B W78LE812	W78E51B W78E65P
ZILOG	Z86E02(186x/1903) Z86E06 Z86E30(1873) Z86E43	Z86E02(1925) Z86E08 Z86E31 Z86E44	Z86E03 Z86E08PEC Z86E40 Z86733	Z86E04 Z86E08SEC Z86E40(1873) Z86743	Z86E04PEC Z86E08(186x/1903) Z86E61	Z86E04SEC Z86E08(1925) Z86E63	Z86E04(186x/1903) Z86E21 Z86E33	Z86E04(1925) Z86E30 Z86E34
PROM :								
AMD	Am27S12 Am27S19 Am27S23 Am27S291A Am27S43	Am27S12A Am27S19A Am27S25 Am27S32 Am27S43A	Am27S13 Am27S191 Am27S25A Am27S32A Am27S45	Am27S13A Am27S191A Am27S28 Am27S33 Am27S45A	Am27S185 Am27S20 Am27S28A Am27S35 Am27S47	Am27S185A Am27S20A Am27S29 Am27S35A Am27S47A	Am27S18 Am27S21 Am27S29A Am27S37 Am27S51	Am27S18A Am27S21A Am27S291 Am27S37A Am27S51A
ATMEL	AT27HC641R	AT27HC642R						
CYPRESS	CY7C225 CY7C261 CY7C271 CY7C282 CY7C292	CY7C225A CY7C263 CY7C271A CY7C282A CY7C292A	CY7C235 CY7C264 CY7C274 CY7C285 CY7C293A	CY7C235A CY7C265 CY7C276 CY7C286	CY7C245 CY7C266 CY7C277 CY7C287	CY7C245A CY7C268 CY7C279 CY7C289	CY7C251 CY7C269 CY7C281 CY7C291	CY7C254 CY7C270 CY7C281A CY7C291A
FUJITSU	MB7123E MB7127H MB7131H MB7132L-SK MB7137E MB7138H-SK MB71C44	MB7123H MB7127L MB7131H-SK MB7132Y MB7137E-SK MB7138Y	MB7123L MB7128E MB7131L MB7132Y-SK MB7137H MB7138Y-SK	MB7124E MB7128H MB7131L-SK MB7133E MB7137H-SK MB71A38	MB7124H MB7128L MB7132E MB7133H MB7137L MB7142E	MB7124L MB7128Y MB7132E-SK MB7134E MB7138E MB7142H	MB7124Y MB7131E MB7132H MB7134H MB7138E-SK MB7144E	MB7127E MB7131E-SK MB7132L MB7134Y MB7138H MB7144H
ICT	27CX321	27CX322	27CX641	27CX642				
NATIONAL	74LS471 74S472B 74S571B 87S185	74S287 74S473 74S572 87S185A	74S287A 74S473A 74S572A 87S185B	74S288 74S474 74S573 87S191	74S387 74S570 74S573A 87S191A	74S387A 74S570A 74S573B 87S191B	74S472 74S571 87S181	74S472A 74S571A 87S181A
PHILIPS	82S123 82S131 82S147 82S185B	82S123A 82S131A 82S147A 82S191	82S126 82S135 82S181 82S191A	82S126A 82S135 82S181A 82S191B	82S129 82S137 82S181B 82S191C	82S129A 82S137A 82S181C 82S23	82S130 82S137B 82S185	82S130A 82S141 82S185A
RUSSIAN	556RT6	556RT7	556RT12	556RT13	556RT14	556RT15		
WAFERSCALE-I.	57C49	57C49B	57C49C	57C51	57C51C			